



RMA Usage Review and Removal Service

Achieve better correspondent monitoring

Managing and controlling your business relationships is of primary importance. With SWIFT, this is done via the exchange of [Relationship Management Application \(RMA\) keys](#), enabling the exchange of SWIFT FIN traffic between two institutions.

Benefits

- Review inbound and outbound RMA usage by correspondent
- Avoid unwanted traffic
- Reduce maintenance cost and risk by identifying dormant or unused business relationships
- Access to business intelligence data to make fact-based decisions
- Automated and reliable removal of unwanted RMA records

Learn more

To learn more about RMA follow our two [SWIFTSmart curricula](#) to learn the basics of RMA and how to operate the Alliance Relationship Management GUI.

Contact us

For further information about RMA Usage Review and Removal Service please contact your account manager, your [local SWIFT office](#) or visit www.swift.com.

Having a view on your RMA authorisations can serve as a very effective first line of defence against undesirable or unexpected transaction flows. Equally important, an unknown RMA relationship is potentially an open door for transactions that you might not even be aware of and that could potentially mitigate your institutions' operational excellence.

The challenges many institutions currently face is that RMA usage has grown over time and may not be aligned or conform to your internal compliance processes. With the current emphasis on risk management practices in Correspondent Banking, it is critical to perform a regular, thorough review of all RMA authorisations. For those financial institutions maintaining relationships with hundreds or thousands of correspondents, typically operating globally, this can represent a sizeable effort and cost burden.

This is where SWIFT can leverage the expertise of its consultants and perform analysis of centralised traffic information to help an organisation facilitate and greatly accelerate this mission.

RMA usage review

[SWIFT Services](#) can support your institution in ensuring you do not mistakenly send or receive FIN messages to or from unwanted correspondents.

SWIFT's RMA usage review consists of providing your institution with a comprehensive file (Figure 1) listing all your counterparties, enabled inbound and outbound RMAs and the type of traffic exchanged, together with volume of traffic and when the last transaction with that counterparty occurred.

- Create a list of your correspondents

with whom authenticated messages are exchanged (Figure 1);

- Access to relevant information on the traffic exchanged with your correspondents (dates, volumes, nature, direction) for the last 12 months;
- Identify unused, dormant and inactive RMA authorisations and mark them as attention points (Figure 2);
- Compare your performance regarding dormant and inactive RMAs with your peers;
- Review usage and presence of RMA Plus.

With these thorough RMA assessments, your institution now has all the necessary information in hands to perform the clean-up of RMA relationships.

However, you can also choose to get assistance for removing RMA relationships and request a "RMA removal service."

RMA removal service

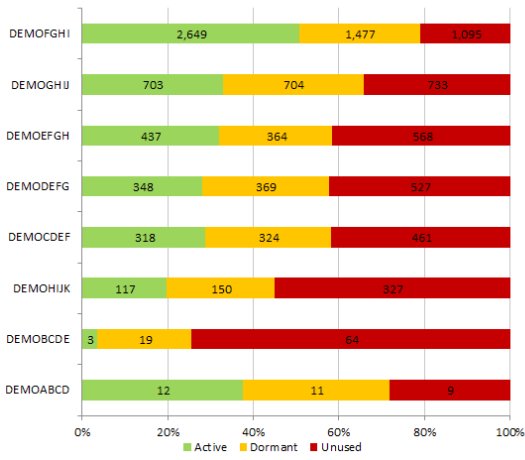
Additionally to the RMA usage review, SWIFT Services can also perform the removal of your RMA relationships on your behalf. This service helps you perform the following activities with peace of mind:

- Helping you notify your correspondents of your intention to remove the RMA keys;
- After your approval, deleting the highlighted RMA authorisations by creating the necessary RMA messages.

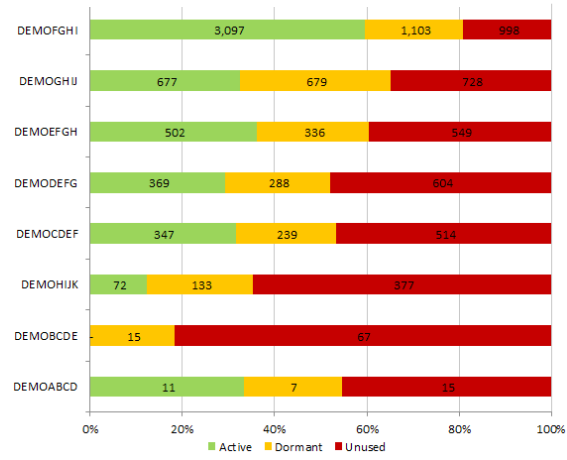
DEMOMFGHI				DEMOMGHU				DEMOMEFGH				DEMODEFG				DEMOCDEF				DEMOHIJK				DEMOBCDE				DEMOABCD			
Dem ID	Ent ID	Con	Con	Dem ID	Ent ID	Con	Con	Dem ID	Ent ID	Con	Con	Dem ID	Ent ID	Con	Con	Dem ID	Ent ID	Con	Con	Dem ID	Ent ID	Con	Con	Dem ID	Ent ID	Con	Con				
DEMOMFGHI001	1	Active	Active	DEMOMGHU001	1	Active	Active	DEMOMEFGH001	1	Active	Active	DEMODEFG001	1	Active	Active	DEMOCDEF001	1	Active	Active	DEMOHIJK001	1	Active	Active	DEMOBCDE001	1	Active	Active	DEMOABCD001	1	Active	Active
DEMOMFGHI002	1	Dormant	Dormant	DEMOMGHU002	1	Dormant	Dormant	DEMOMEFGH002	1	Dormant	Dormant	DEMODEFG002	1	Dormant	Dormant	DEMOCDEF002	1	Dormant	Dormant	DEMOHIJK002	1	Dormant	Dormant	DEMOBCDE002	1	Dormant	Dormant	DEMOABCD002	1	Dormant	Dormant
DEMOMFGHI003	1	Unused	Unused	DEMOMGHU003	1	Unused	Unused	DEMOMEFGH003	1	Unused	Unused	DEMODEFG003	1	Unused	Unused	DEMOCDEF003	1	Unused	Unused	DEMOHIJK003	1	Unused	Unused	DEMOBCDE003	1	Unused	Unused	DEMOABCD003	1	Unused	Unused

▲ Figure 1 – List of correspondents with which authenticated messages are exchanged (dummy data)

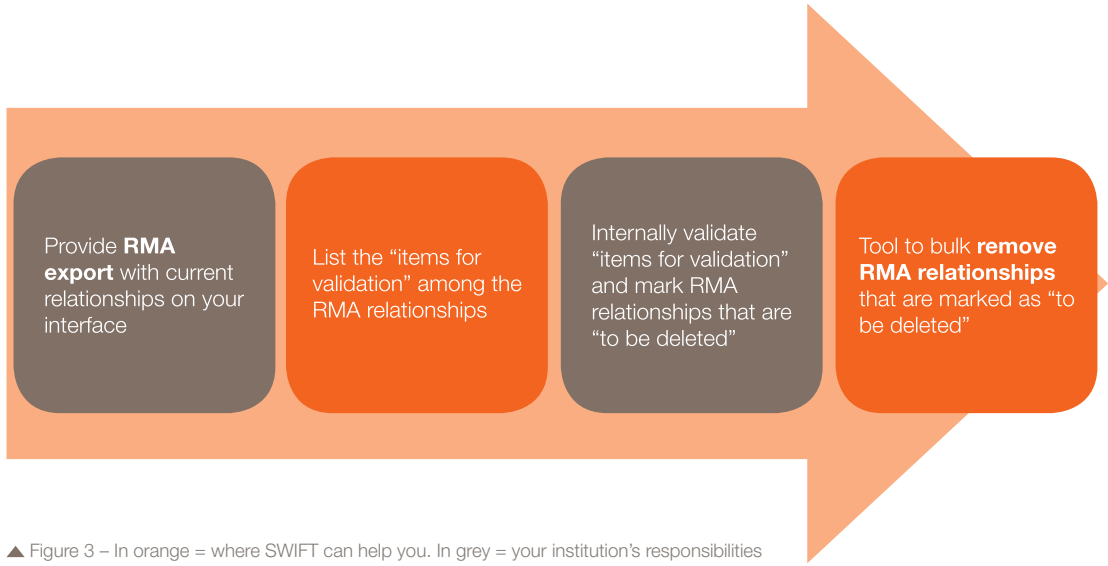
Outbound RMAs per Entity



Inbound RMAs per Entity



▲ Figure 2 – Get a summary on the status of all RMAs (by branch)



▲ Figure 3 – In orange = where SWIFT can help you. In grey = your institution's responsibilities