



# Watch Banking Insights

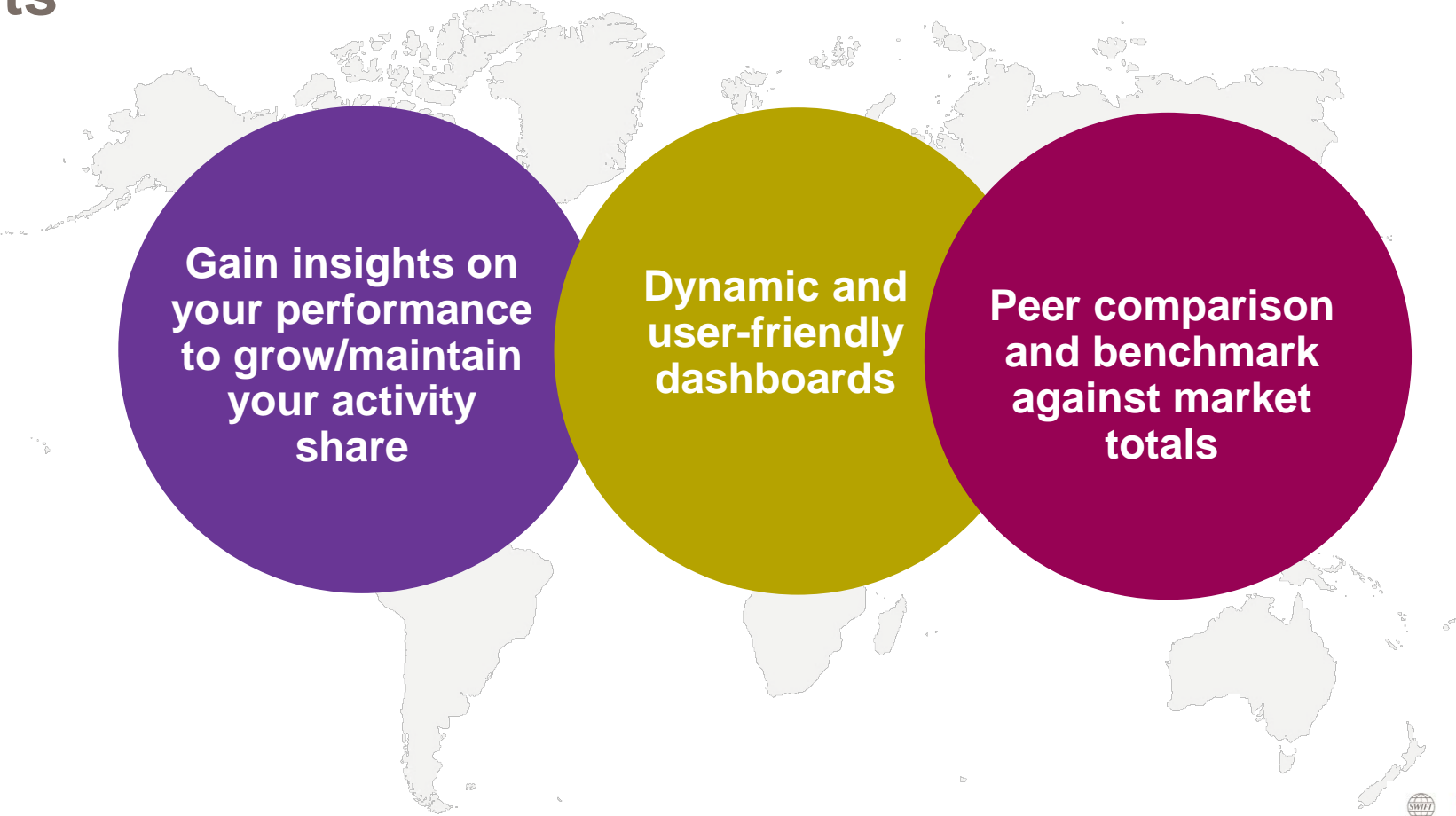
## Cash and Payments

Business Intelligence solutions

November 2017

# Watch Banking Insights

## Key benefits



# Watch Banking Insights dashboards

Watch Banking Insights provides pre-defined, yet dynamic dashboards giving you meaningful and actionable business insights through immediate visuals.

## Cash & Payments dashboard

Track the evolution of your Cash Management and Payments activity.

Message Types covered:

- Category 1 - Customer Transfers and Cheques
- Category 2 – Financial Institutional Transfers
- Category 9 - Cash Management and Customer Status

## Trade Finance dashboard

Monitor your Trade Finance footprint and portfolio.

Message Types covered:

- Category 4 - Collections and Cash Letters
- Category 7 - Documentary Credits and Guarantees

## Network Management dashboard

Manage your Correspondent Network for Cash & Payments, and Trade Finance.

Message Types covered:





- Category 1 - Customer Transfers and Cheques
- Category 2 – Financial Institutional Transfers
- Category 4 - Collections and Cash Letters
- Category 7 - Documentary Credits and Guarantees
- Category 9 - Cash Management and Customer Status

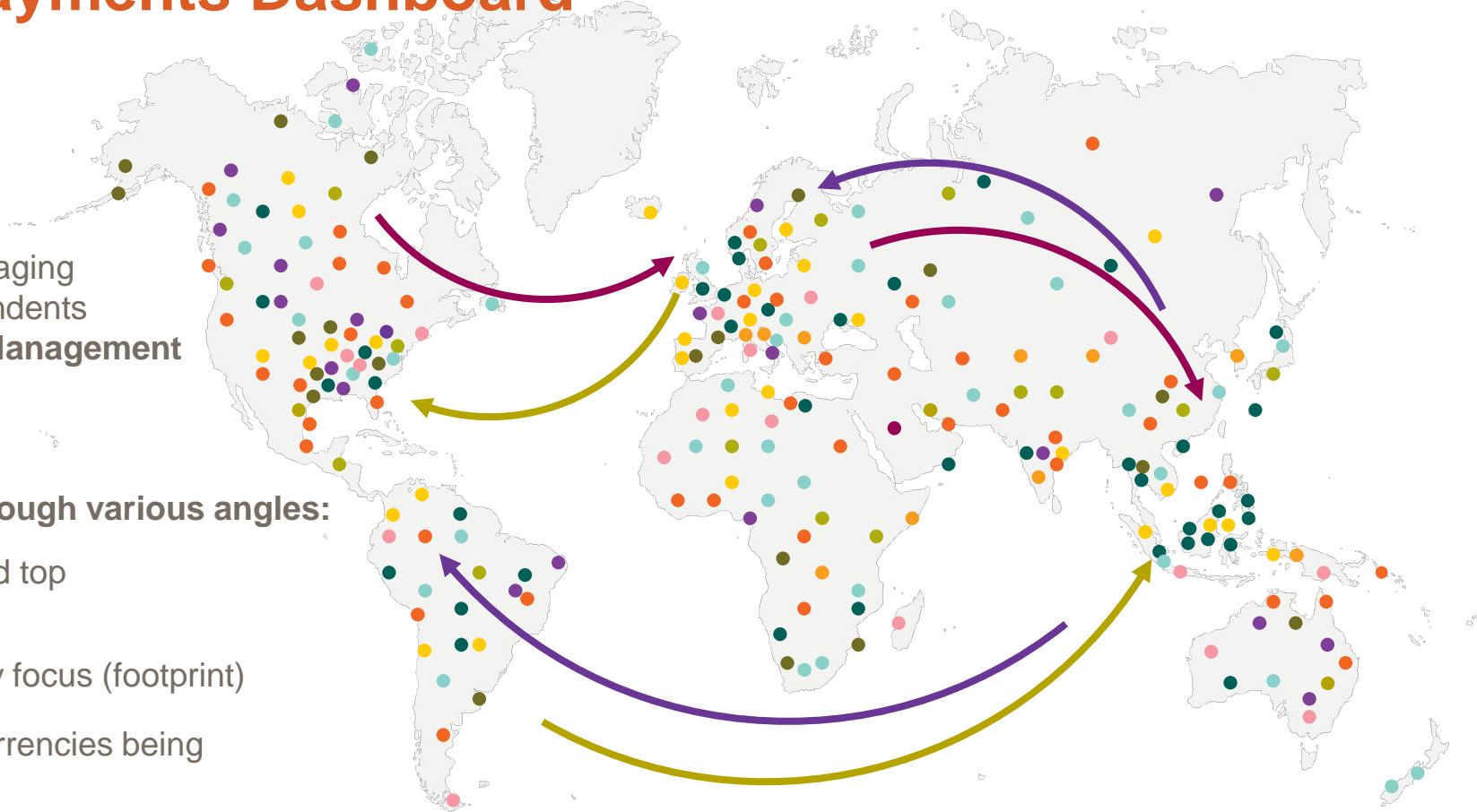


# Cash and Payments Dashboard

The focus is on your messaging activity with your correspondents for **Payments and Cash Management** purposes.

Data can be analysed through various angles:

-  General overview and top activities (scope)
-  Regional and country focus (footprint)
-  Message types or currencies being used (portfolio)
-  Activity share



# Cash and Payments Dashboard

Tabs available to deep dive on different views and analysis

Overview

Scope

Footprint

Portfolio

Activity  
Share

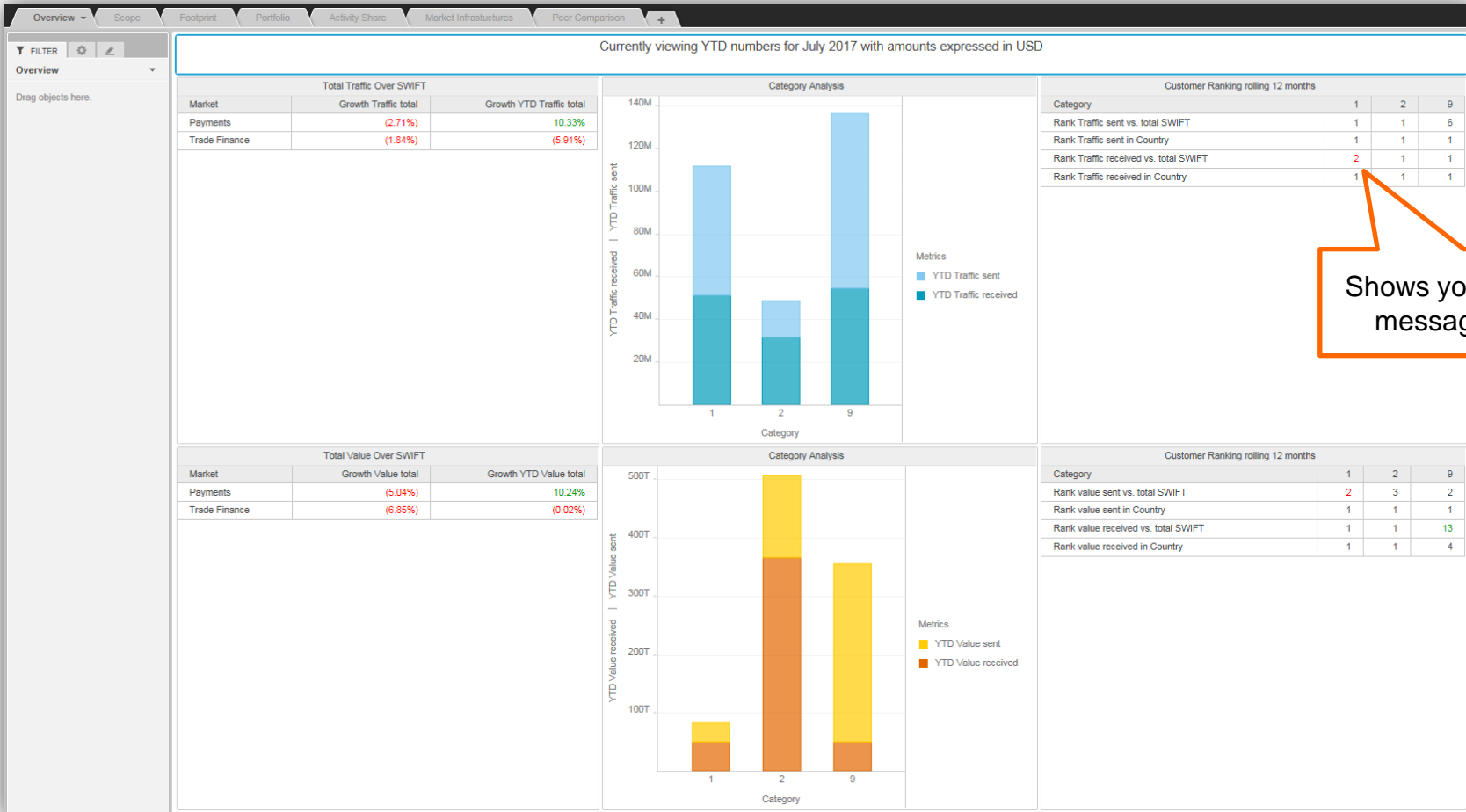
Market  
Infrastructures

Peer  
Comparison



# Overview

Your overall SWIFT traffic growth by volume and value and ranking over the past 12 months

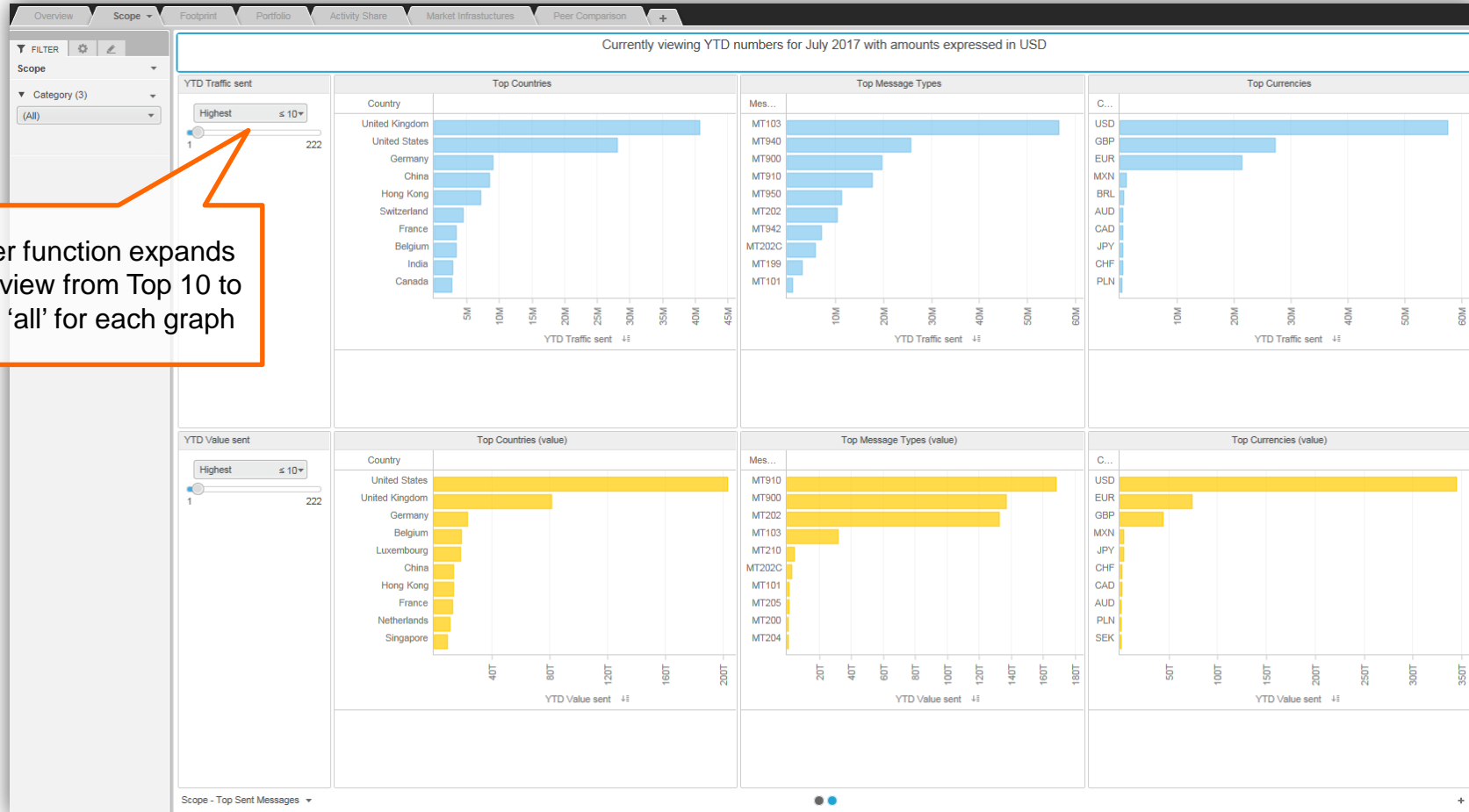


Shows your ranking per message Category



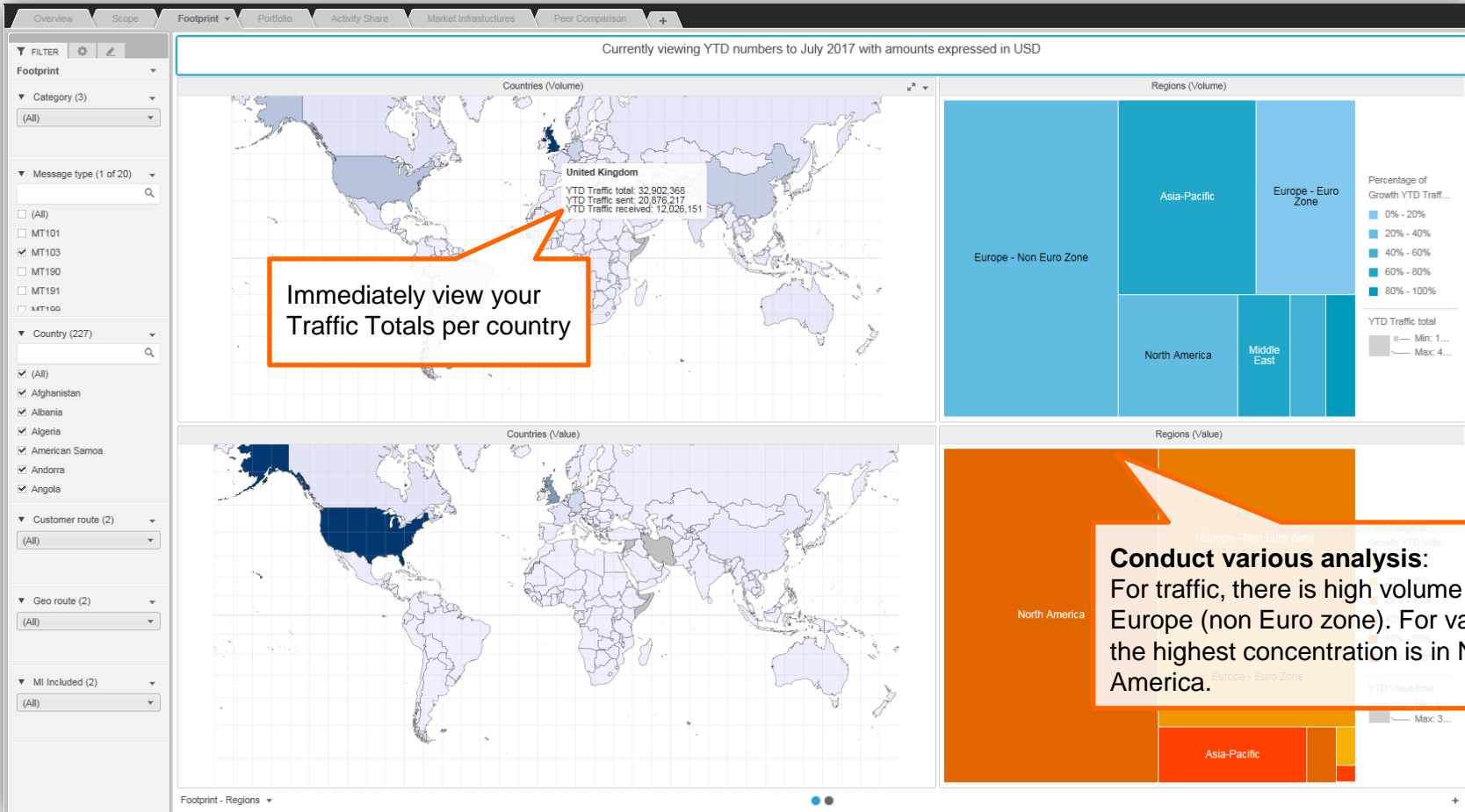
# Scope

Quickly identify the concentration of your business



# Footprint

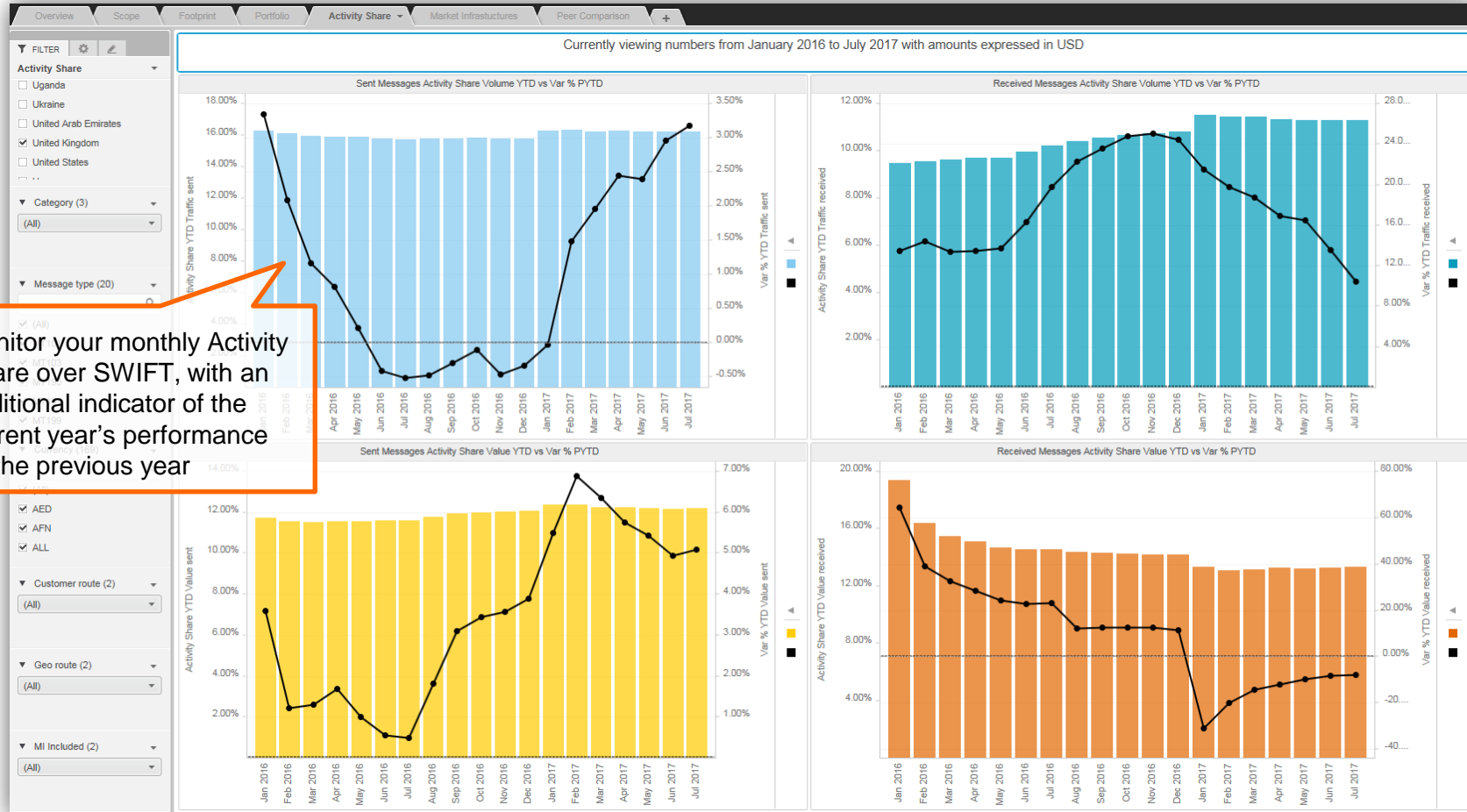
Displays a heat map of your highest regional concentration for traffic and value





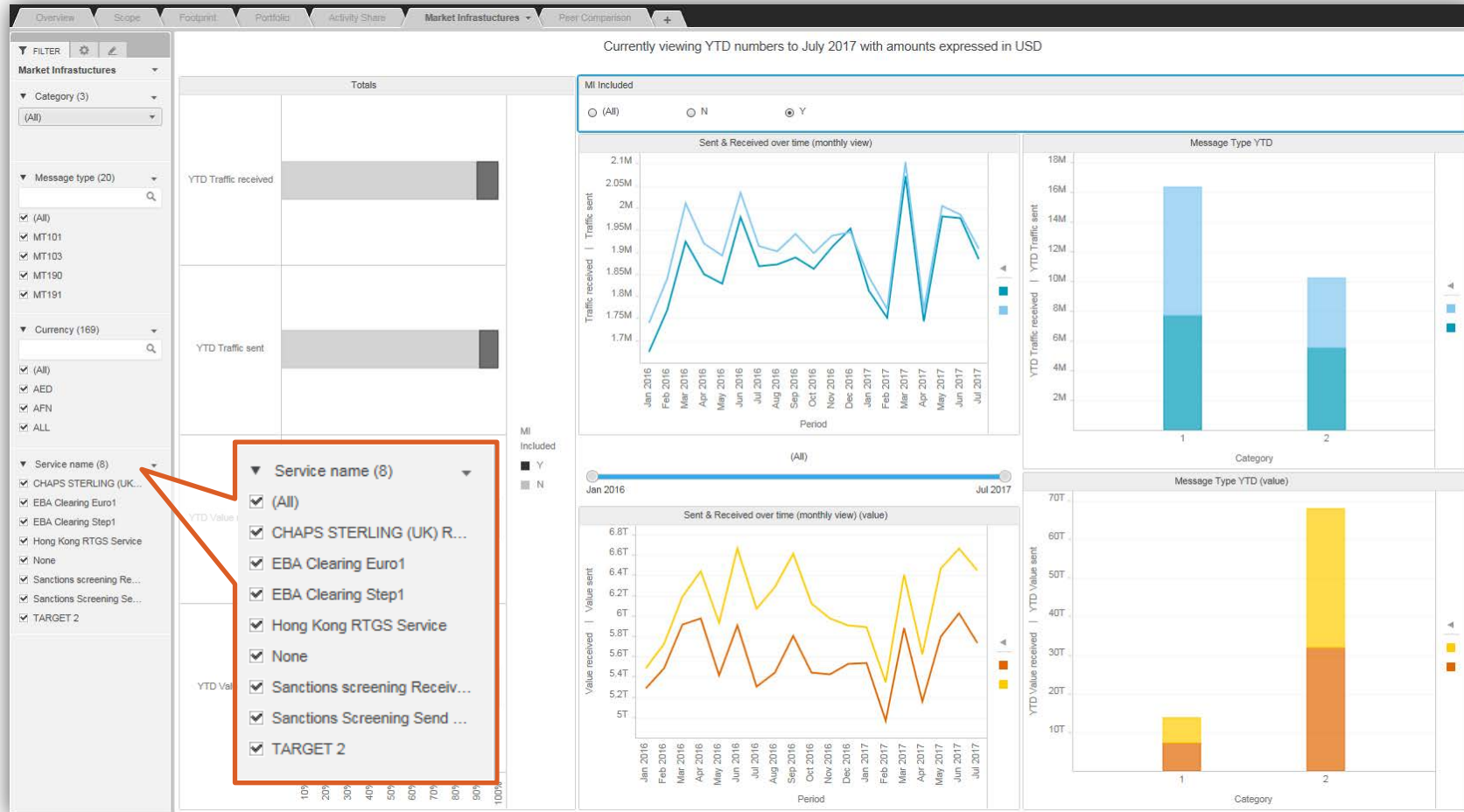
# Activity Share

Compare your data to SWIFT Totals



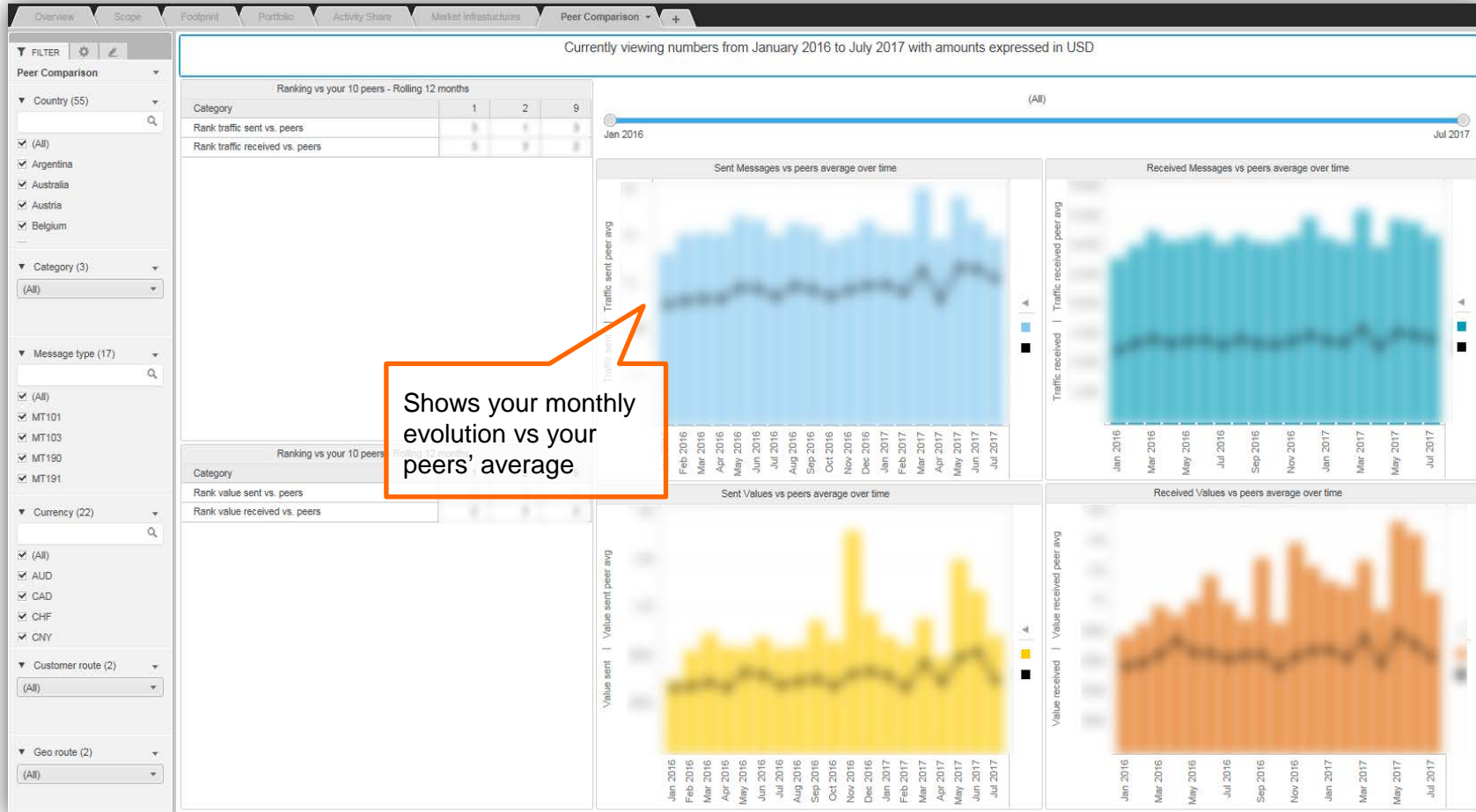
# Market Infrastructures

Monitor your activity with Market Infrastructures



# Peer Comparison

Compares your performance against your peers



Shows your monthly evolution vs your peers' average



# Find out more about Watch



Learn more on our e-training platform:

## [SWIFT Smart](#)

Access to this module is only available for swift.com registered users.  
Dedicated e-trainings on Watch Products available

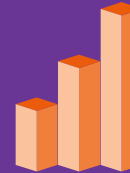


## [SWIFT Business Intelligence](#)

[Watch documentation](#)



## [Customer Support](#)



Documentation available on the  
[Watch platform](#)



[Business Intelligence](#)  
[Transaction Banking](#)



Send us your feedback  
at [watch@swift.com](mailto:watch@swift.com)





[www.swift.com](http://www.swift.com)