



Watch Banking Insights

Trade Finance

Business Intelligence solutions

June 2018

Watch Banking Insights

Key benefits



Gain insights on your performance to grow/maintain your activity share

Dynamic and user-friendly dashboards

Peer comparison and benchmark against market totals



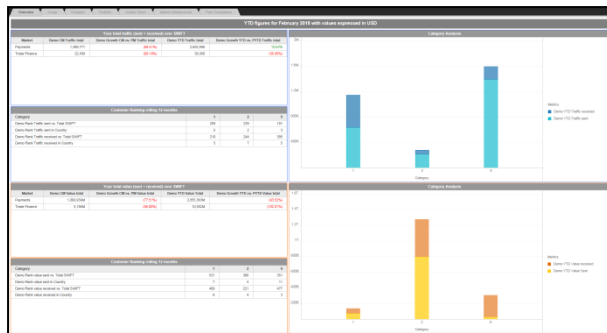
Watch Banking Insights

Cash and Payments dashboard

Track the evolution of your **Cash Management and Payments activity**.

Message Types covered:

- Category 1 – Customer Transfers and Cheques
- Category 2 – Financial Institutional Transfers
- Category 9 – Cash Management and Customer Status

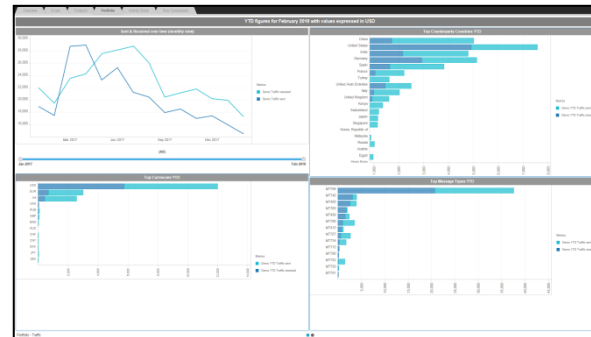


Trade Finance dashboard

Monitor your **Trade Finance footprint and portfolio**.

Message Types covered:

- Category 4 - Collections and Cash Letters
- Category 7 - Documentary Credits and Guarantees



Network Management dashboard

Manage your **Correspondent Network for Cash & Payments, and Trade Finance**.

Message Types covered:

- Category 1 - Customer Transfers and Cheques
- Category 2 – Financial Institutional Transfers
- Category 4 - Collections and Cash Letters
- Category 7 - Documentary Credits and Guarantees
- Category 9 - Cash Management and Customer Status

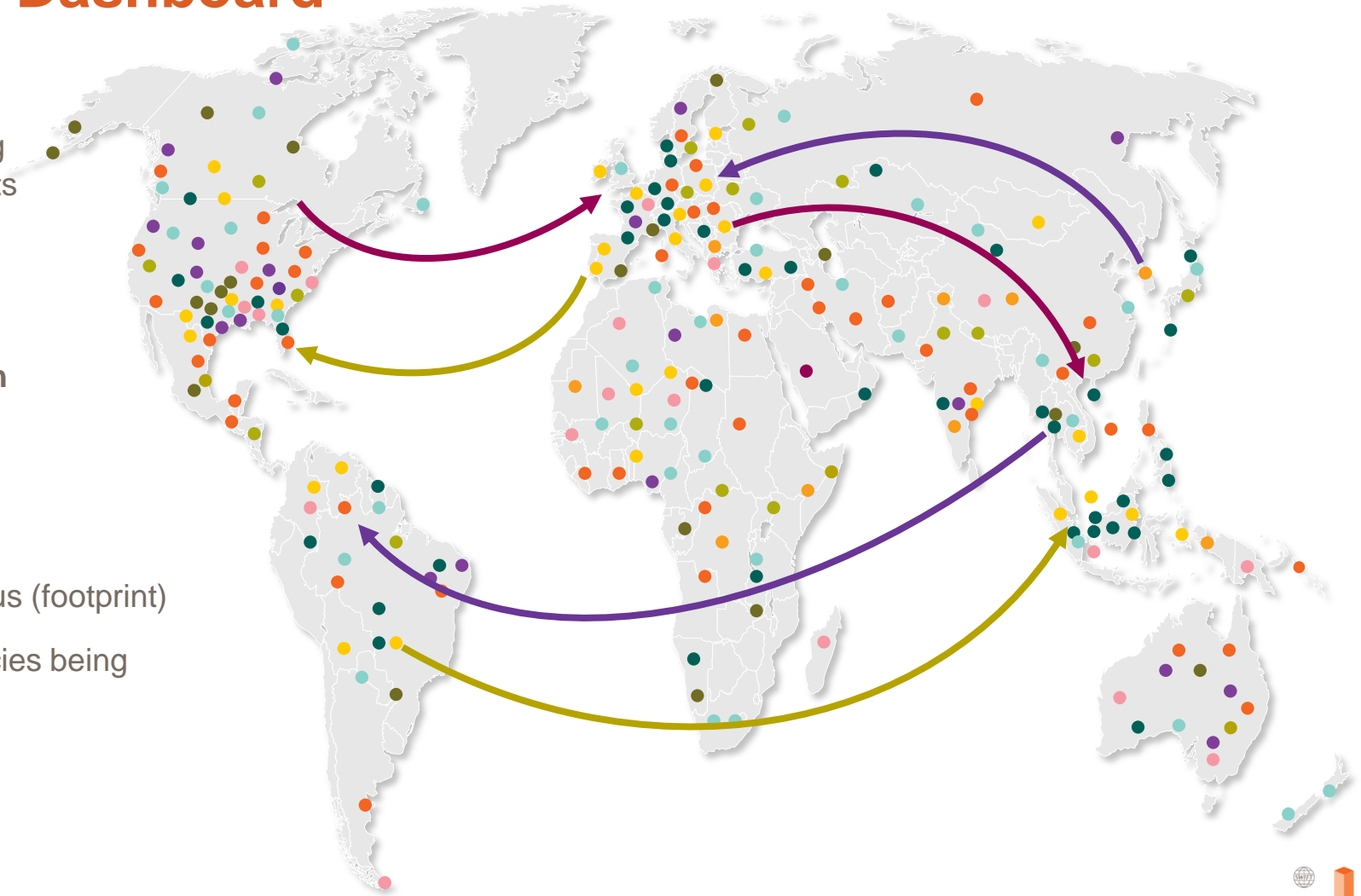


Trade Finance Dashboard

The focus is on your messaging activity with your correspondents for **Trade Finance purposes**.

Data can be analysed through various angles:

-  General overview and top activities (scope)
-  Regional and country focus (footprint)
-  Message types or currencies being used (portfolio)
-  Activity share
-  SWIFT Totals



Trade Finance Dashboard

Tabs available to deep dive on different views and analysis

Overview

Scope

Footprint

Portfolio

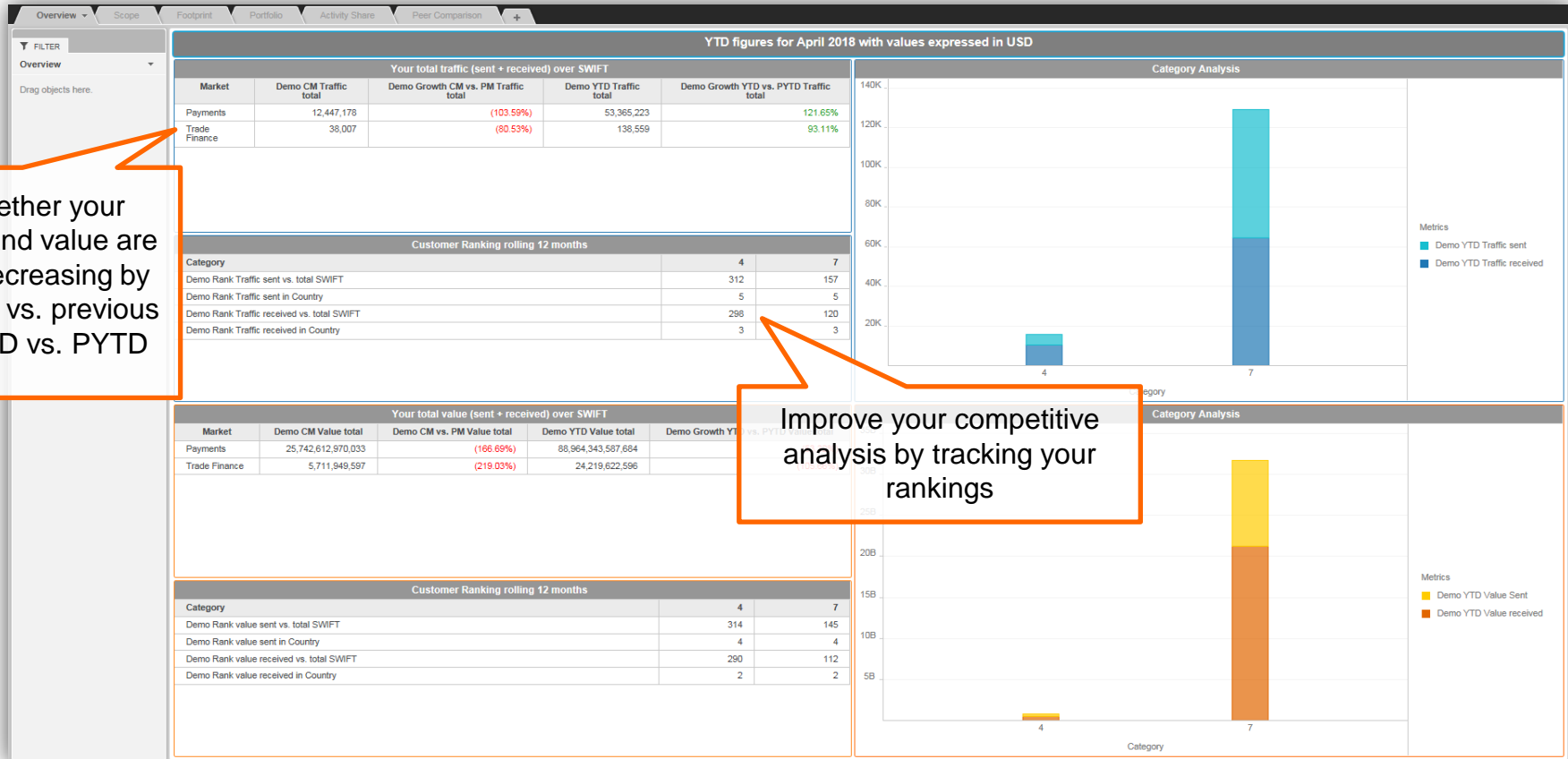
Activity Share

Peer
Comparison



Overview

Your Payments and Trade Finance SWIFT traffic growth by volume and value, and ranking over the last 12 months



Monitor whether your actual traffic and value are growing or decreasing by current month vs. previous month or YTD vs. PYTD

Improve your competitive analysis by tracking your rankings

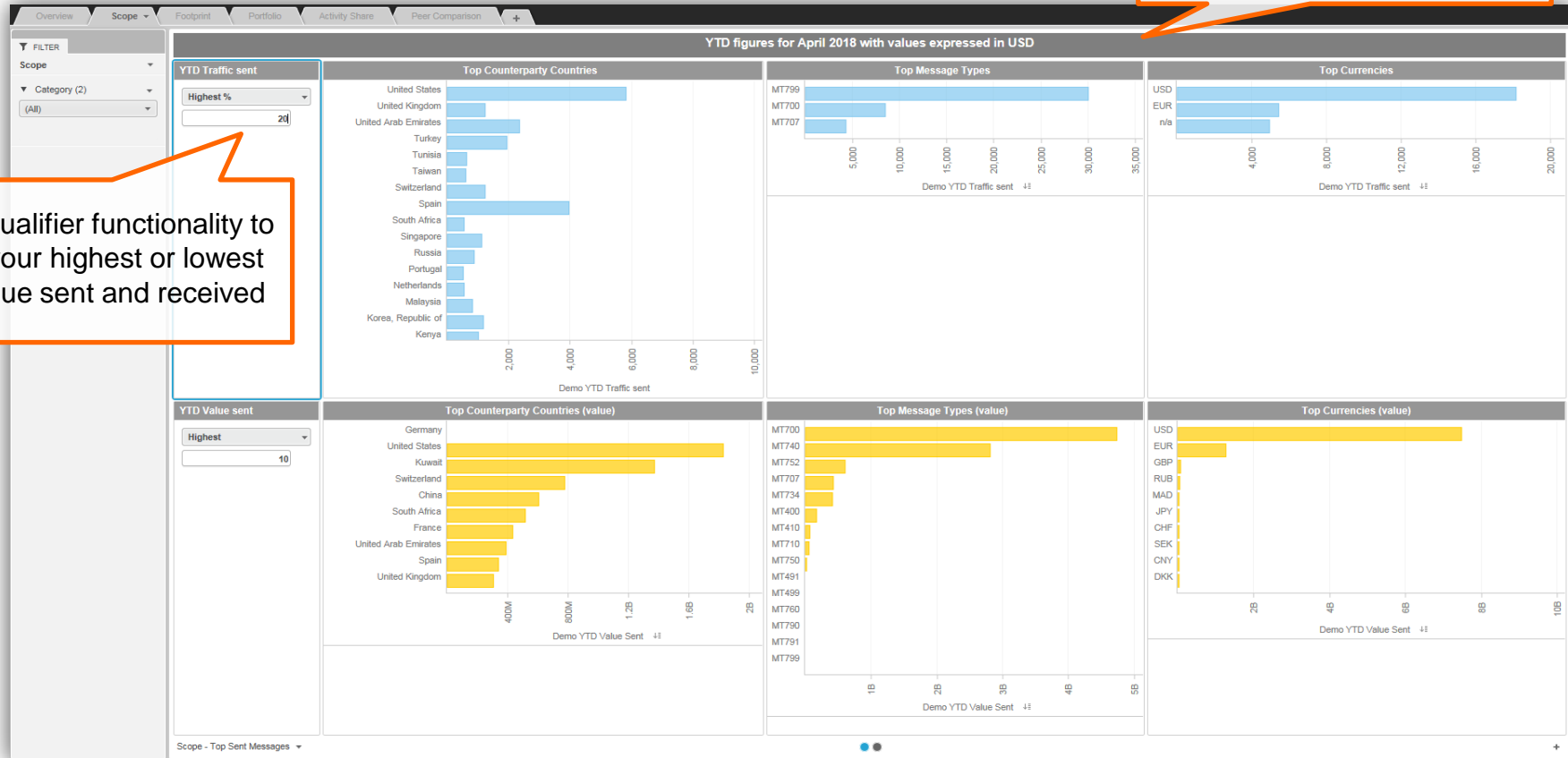


Scope

Quickly identify the concentration of your business

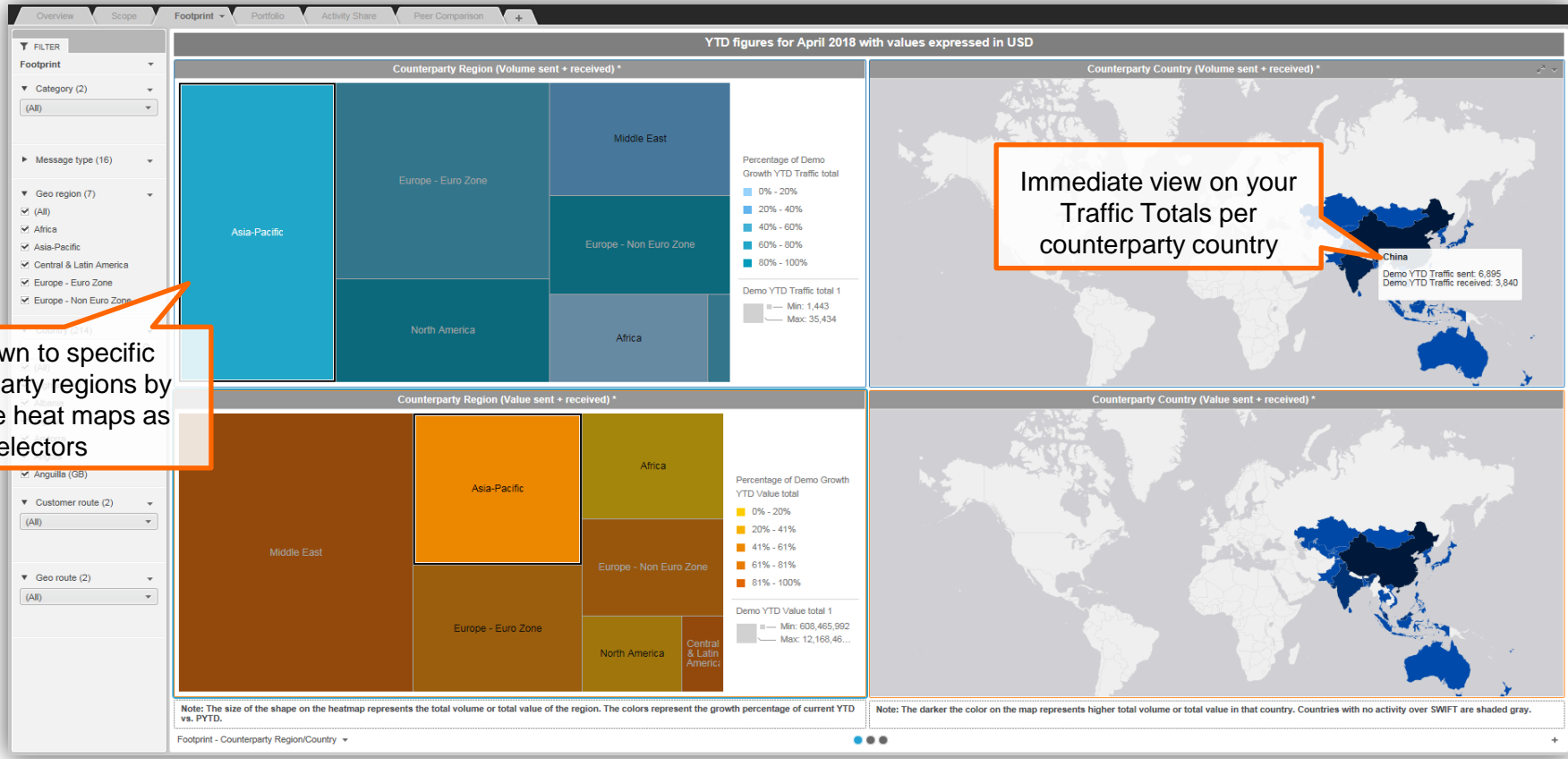
Identify which countries you send the most messages to and in what currencies are these instructed

Use the qualifier functionality to identify your highest or lowest traffic/value sent and received



Footprint

Displays a heat map of your highest regional concentration for traffic and value



Drill down to specific counterparty regions by using the heat maps as selectors

Immediate view on your Traffic Totals per counterparty country



Footprint

Data from the heat map and world map combined into one grid to facilitate further analysis

YTD figures for April 2018 with values expressed in USD

Geo region		Counterparty Country	Demo YTD Traffic sent	Demo Growth Traffic Sent YTD vs. PYTD	Demo YTD Traffic received	Demo Growth Traffic Received YTD vs. PYTD	Demo YTD Traffic sent + received	Demo Growth Traffic sent + received YTD vs. PYTD
Africa	Burkina Faso		51	(226.91%)	45	123.25%	95	
	Benin		17	(198.91%)	39	128.38%	56	
	Rép. Démocratique du Congo		0	(198.91%)	8	361.71%	8	
	Central African Republic		0	(298.91%)	8	121.71%	8	
	Cote d'Ivoire		39	(228.91%)	98	102.41%	137	(17.53%)
	Cameroon		0	(268.91%)	6	161.71%	6	(23.76%)
	Djibouti		394	(259.25%)	266	156.71%	660	(11.88%)
	Algeria		391	(224.18%)	504	119.03%	895	0.04%
	Ethiopia		82	(284.34%)	59	70.72%	140	(52.18%)
	Ghana		22	(232.24%)	101	177.84%	123	38.57%
	Guinea		37	(38.91%)	112	252.18%	149	140.09%
	Kenya		1,347	(230.09%)	1,785	124.47%	3,132	1.47%
	Lesotho		0	(198.91%)	0	61.71%	0	(63.76%)
	Morocco		425	(227.68%)	751	166.40%	1,176	25.77%
Madagascar		0	(198.91%)	3	111.71%	3	(13.76%)	
Mali		22	(241.77%)	28	111.71%	51	(10.82%)	

Geo region		Counterparty Country	Demo YTD Value Sent	Demo Growth Value Sent YTD vs. PYTD	Demo YTD Value received	Demo Growth Value Received YTD vs. PYTD	Demo YTD Value sent + received	Demo Growth Value sent + received YTD vs. PYTD
Africa	Burkina Faso		132,674	36.93%	321,083	(149.77%)	453,757	(91.61%)
	Benin		0	(67.46%)	49,261,993	352.89%	49,261,993	404.16%
	Rép. Démocratique du Congo		0	32.54%	0	(53.18%)	0	3.55%
	Central African Republic		0	(67.46%)	3,335,521	427.54%	3,335,521	77.58%
	Cote d'Ivoire		224,696	26.41%	222,026,566	8.88%	222,251,262	65.48%
	Cameroon		0	32.54%	0	(153.18%)	0	(96.45%)
	Djibouti		55,114,094	(35.28%)	1,273,608	(141.73%)	56,387,702	(65.46%)
	Algeria		16,948,102	14666.64%	900,877,959	(63.59%)	917,827,061	(5.07%)
	Ethiopia		796,464	(19.23%)	319,701	(153.10%)	1,116,165	(96.16%)
	Ghana		0	32.54%	83,103,534	2388.04%	83,103,534	2444.77%
	Guinea		333,472	32.54%	2,024,800	1980.87%	2,358,272	2412.28%
	Kenya		114,810,827	171.52%	314,276,230	42.86%	429,087,057	135.58%
	Lesotho		0	32.54%	0	(53.18%)	0	3.55%
	Morocco		26,558,917	(59.89%)	56,788,894	76.97%	83,347,811	(75.12%)
Madagascar		0	32.54%	0	(53.18%)	0	3.55%	
Mali		321,099	32.54%	0	(153.18%)	321,099	(95.31%)	

Export your data with ease, and conduct your own customised analysis

- Excel
- PDF
- Data

- Change Visualization
- Swap
- Show Totals
- Use as Filter...
- Show Data
- Remove Data
- Data Source
- Export
- Duplicate
- Copy to
- Move to
- Hide Titlebar
- Maximize
- Format
- Rename
- Delete
- More Options...

New dashboard

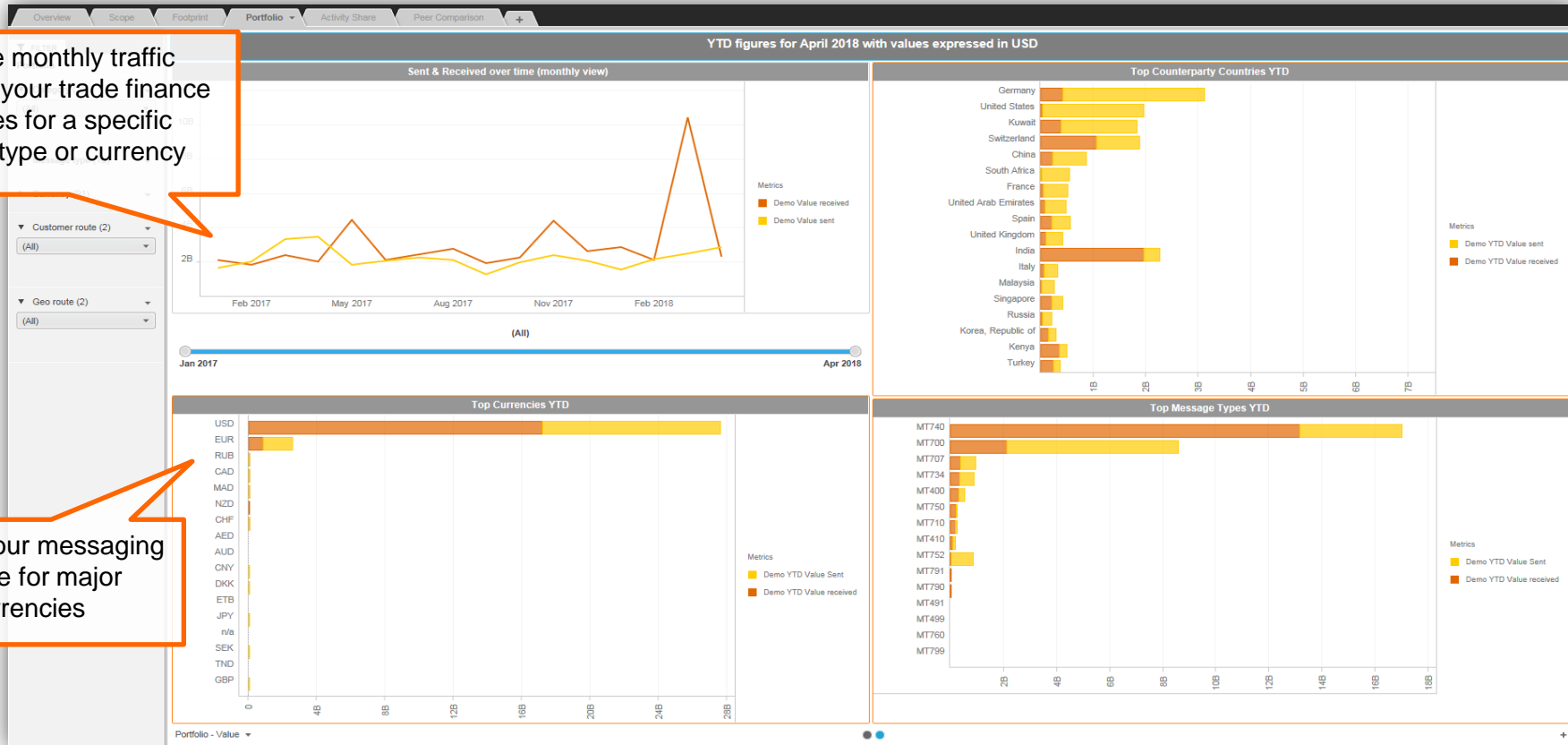


Portfolio

View your top counterparty countries or currencies for a specific message type

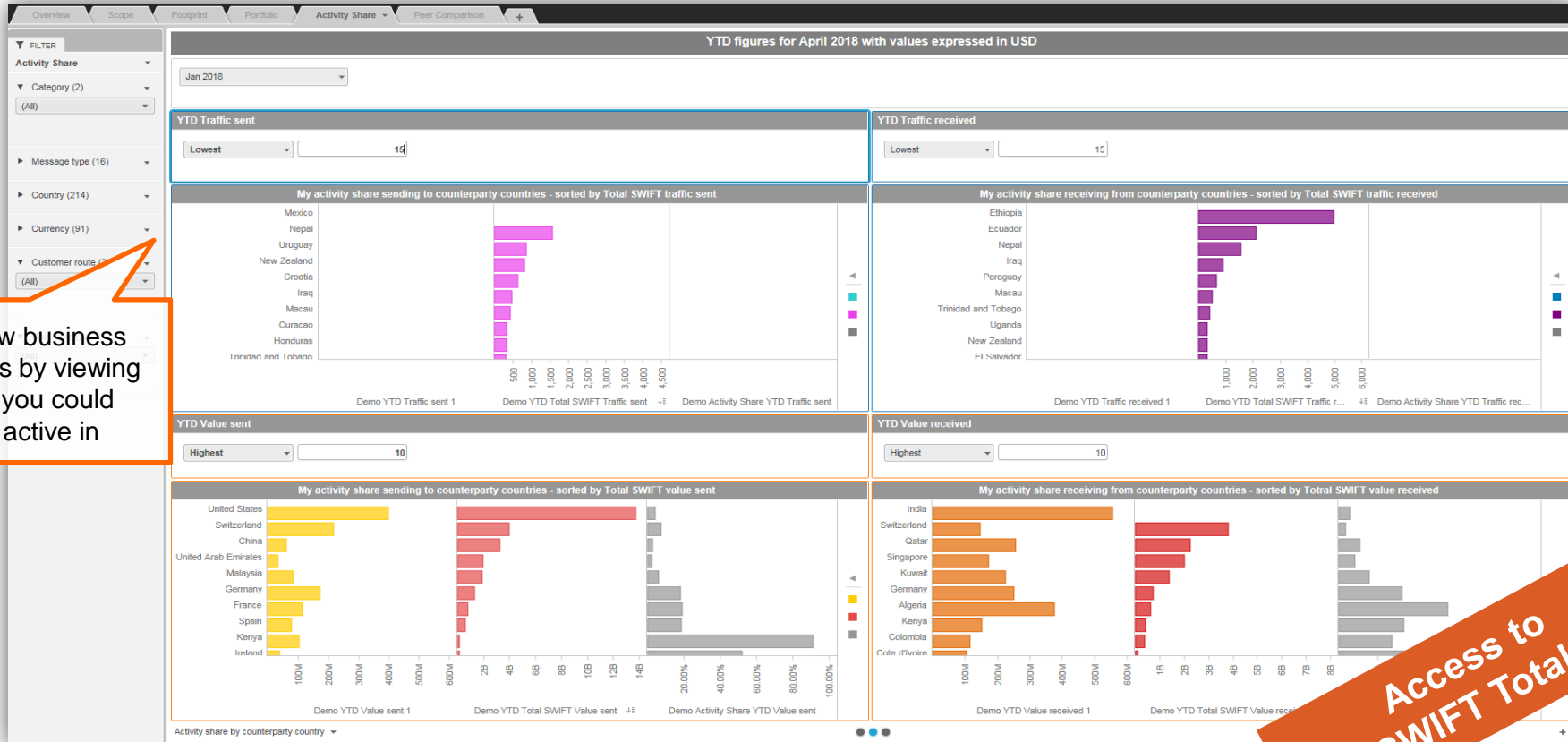
Track the monthly traffic evolution of your trade finance messages for a specific message type or currency

Monitor your messaging volume for major currencies



Activity Share

Compare your performance against SWIFT Totals by counterparty country



Identify new business opportunities by viewing countries you could become active in

Access to SWIFT Totals



Activity Share

Compare your performance against SWIFT Totals by currency



Identify new business opportunities by viewing currencies you can potentially service in

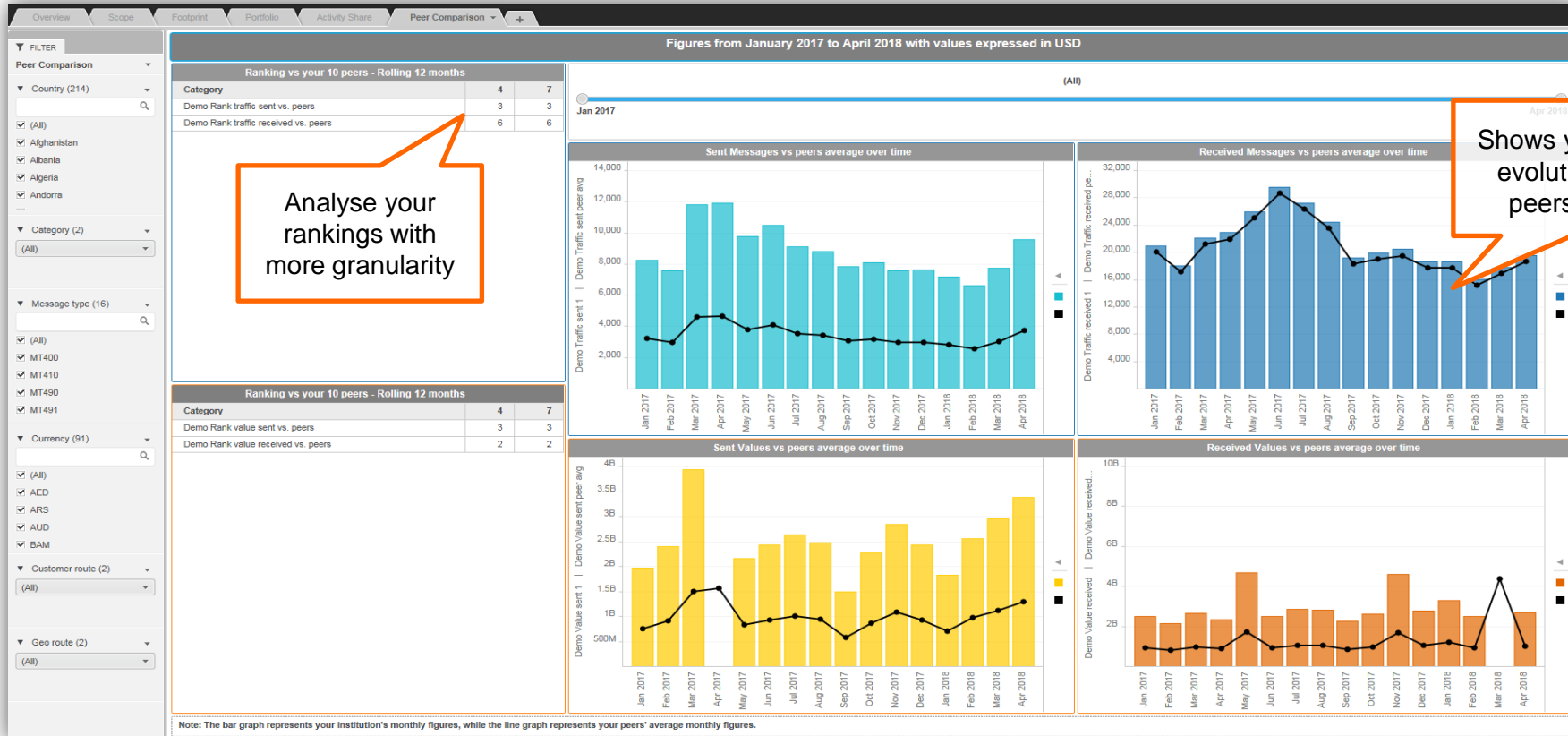
Compare currencies you are using the most in a specific country and benchmark against the SWIFT community

Access to SWIFT Totals



Peer Comparison

Compare your performance against your peers



Find out more about Watch



Learn more on our e-training platform:

[SWIFT Smart](#)

Dedicated e-trainings on Watch Products available
Access to this module is only available for swift.com registered users.

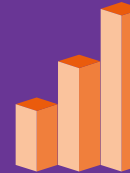


[SWIFT Business Intelligence](#)

[Watch documentation](#)



[Customer Support](#)



Documentation available on the
[Watch platform](#)



[Business Intelligence](#)
[Transaction Banking](#)



Send us your feedback
at watch@swift.com



www.swift.com