



Business Intelligence solutions for gpi

A portfolio of BI products & services to support your gpi business journey

May Yan Lee

16 November 2018

- Join Teleconference (Phone) or Integrated VoIP (PC headset)
- For Phone
 - Click “Country/Region” to select country code
 - Complete phone number
 - You are called by an external number
 - Pick up phone, press 1, you are in the conference
- You can at **any time** enable sound or switch Phone/IP
 - Click “Communicate” then “Audio”
- You will hear silence until the session starts

Housekeeping

- You are on a listen only mode
- Submit questions using Q&A feature
- Questions may be submitted at any time to “All Panelists”
- There will be a Q&A session at end of the presentation

The screenshot displays the Zoom meeting interface. At the top, there are icons for Participants, Chat, and Q&A. A red arrow points to the Q&A icon. Below the icons, the interface shows a list of participants, including the Host. The Q&A section is visible, showing a dropdown menu for 'Ask:' with options: All Panelists, Host, Presenter, and Host & Presenter. A red arrow points to the 'Host' option. A 'Send' button is located to the right of the dropdown menu.



Agenda

1

gpi highlights

2

BI solutions along your gpi journey

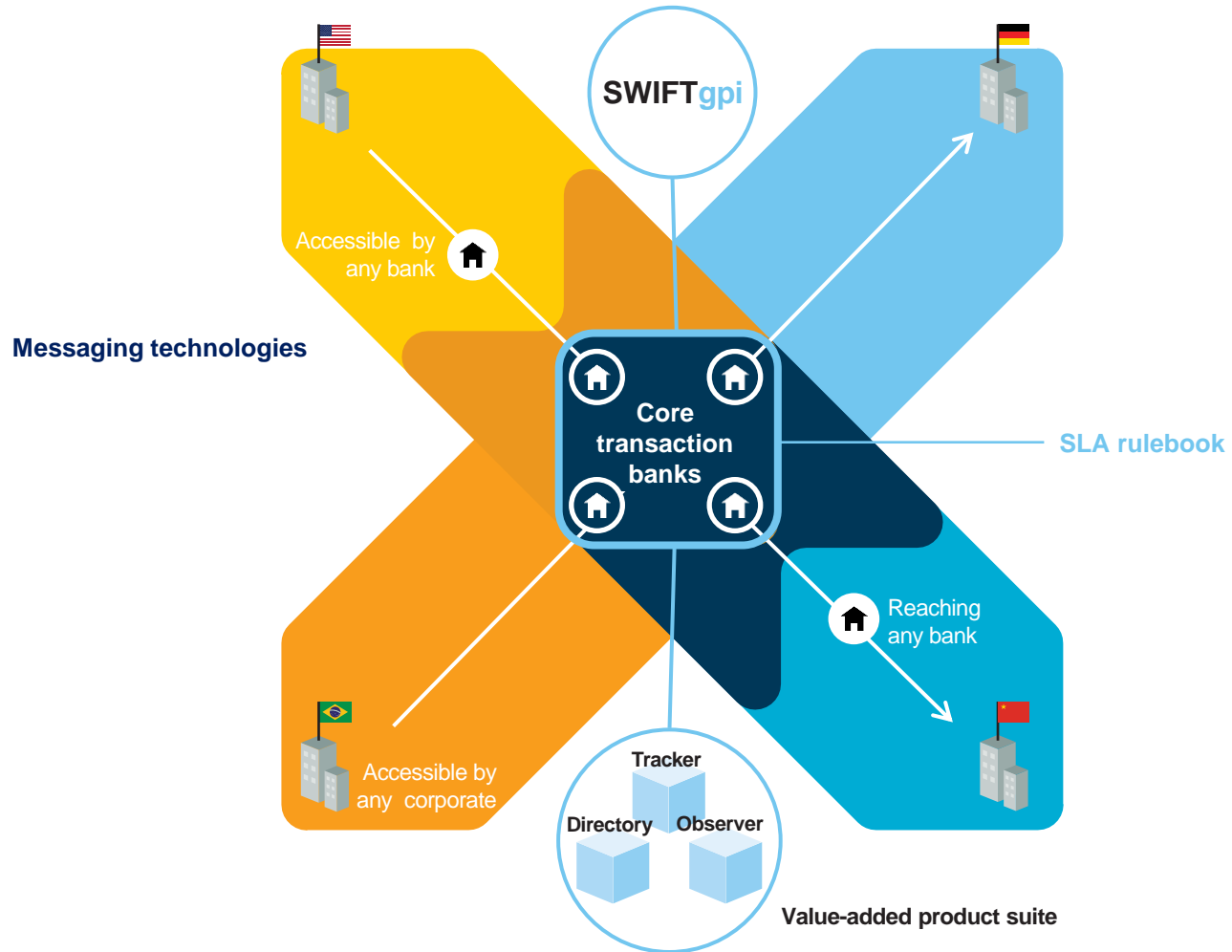
3

gpi Observer Analytics

gpi highlights



SWIFT gpi overview



SWIFT gpi benefits



Fast payments

Credit international beneficiaries in seconds and, at most, minutes.



End-to-end tracking

Track payments end-to-end in real-time.



Fee and FX transparency

See bank fees charged and FX rates applied



Unaltered remittance information

Ensure remittance data is unchanged when payment arrives.



Reduced Costs

Benefit from reduced enquiry costs due to ability to track payments.



Optimised liquidity

Make the most of your liquidity through greater payments visibility.



Ease of implementation

Use your existing SWIFT setup and go live within three months.



Confirmed credit

Receive a credit confirmation message when your beneficiary has been paid.



SWIFT gpi in numbers

October 2018

270+

Banks committed to implement,
49 of top 50 banks signed

78

Banks live
160+ banks in implementation
phase

55+

Market Infrastructures
exchanging gpi traffic

700+

Country corridors

80+%

SWIFT cross-border payments
represented

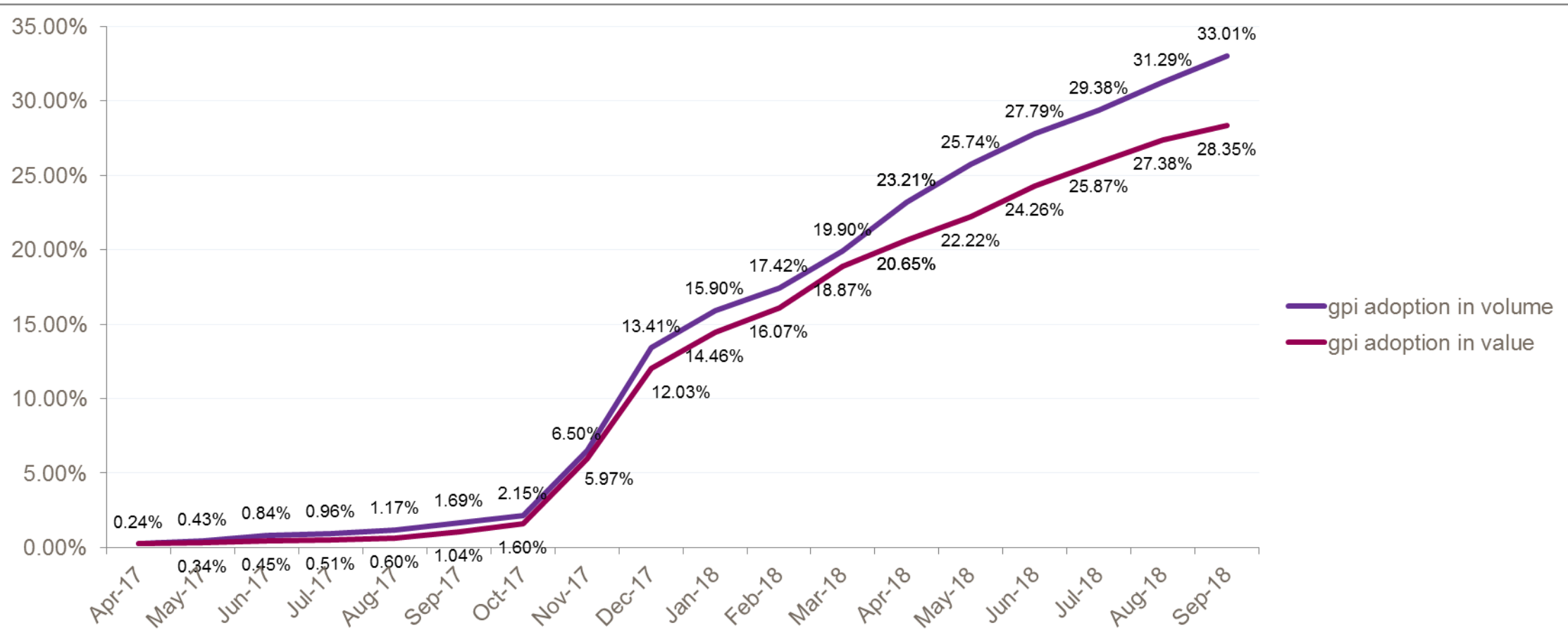
100+ B

USD Payments sent as gpi daily



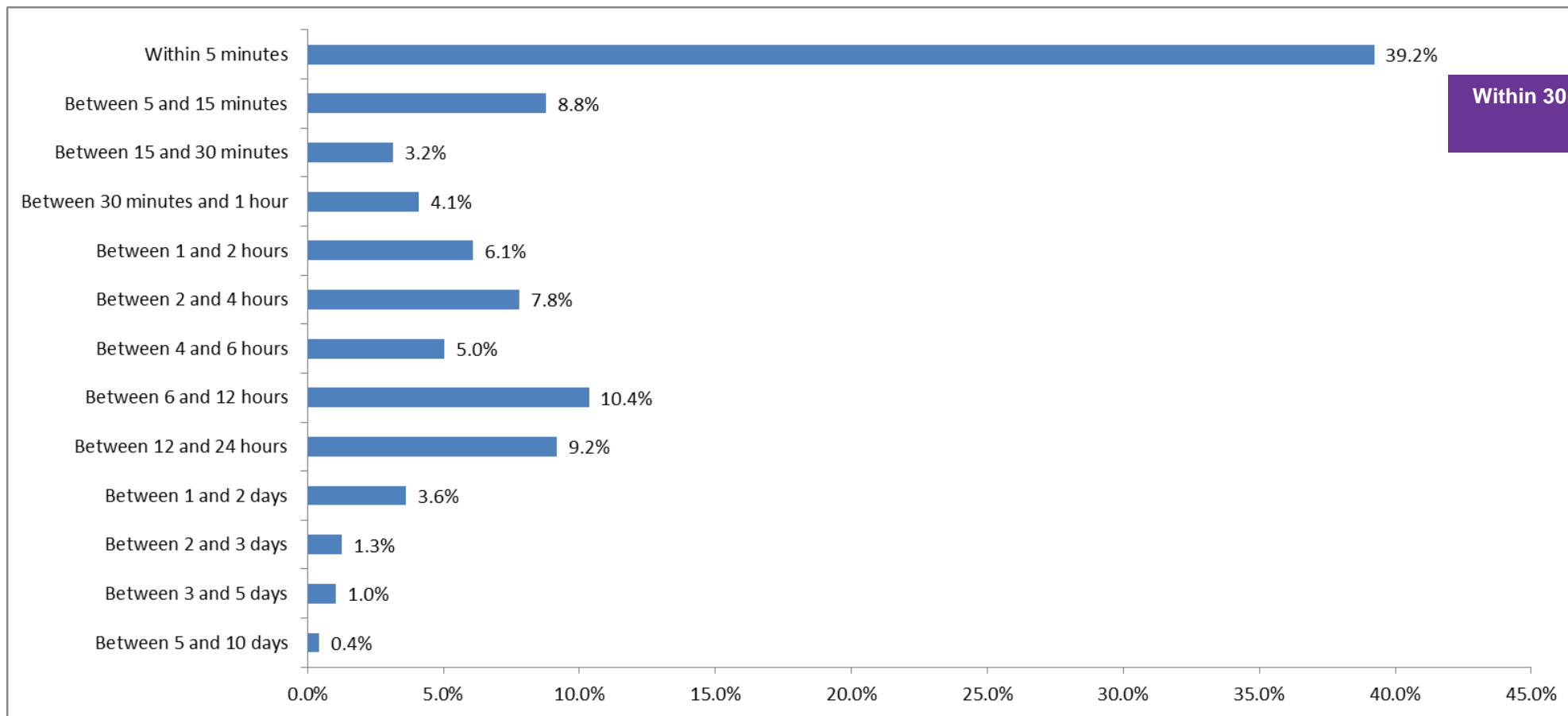
Global gpi adoption – Volumes and Values

Live gpi MT 103s vs live total MT 103s (gpi to gpi and gpi to non-gpi since November 2017), international, Inter-Group



Speed of gpi payments

Live, delivered MT 103 and MT 202 sent for September 2018, future value date transaction excluded



Within 30 minutes:
51.2%



BI solutions along your gpi journey



BI offering along your gpi journey

PROJECT INITIATION

Assess your payment landscape and gpi reach

Watch Banking Premium (P)

End-to-end payment flows (S)



ROLL OUT

Initiate your SWIFT gpi payments

SWIFT gpi flag in Watch portfolio (P)

Monthly monitoring incl. Daily traffic evolution (S)

Monitor your global quality index

Observer Insights (F)



BUSINESS DEVELOPMENT

Gain new insights on business opportunities

Observer Analytics (P)

Watch Banking Premium (P)

End-to-end UETR analysis (S)

P: BI Product

S: BI Service

F: Part of your SWIFT gpi subscription



Project initiation

Assess your payment landscape and SWIFT gpi reach

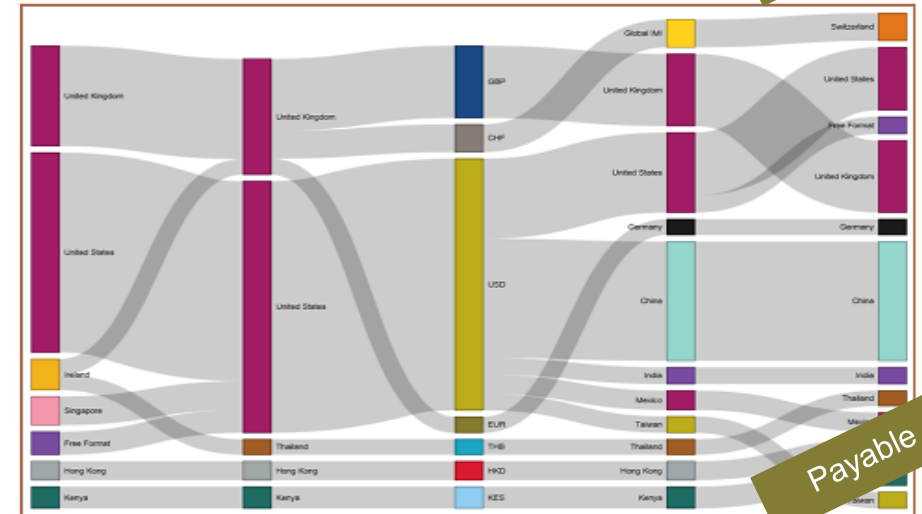
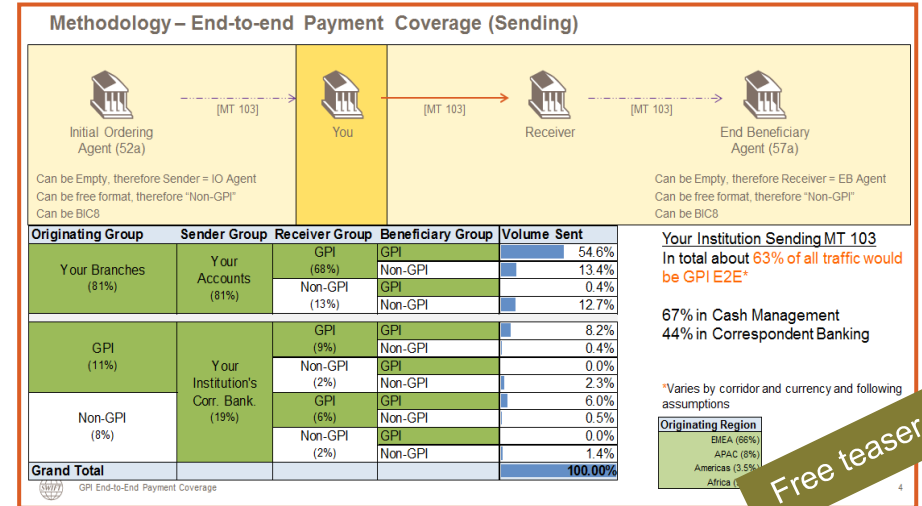
- ### How can BI help you?
- Analyse your main correspondents and currency usage
 - Look at end-to-end flows in traffic and value
 - View your role as instructing, instructed and/or intermediary agent
 - Identify evolving corridors / currencies
 - Understand activity share and ranking

- ### Benefits:
- Support your gpi prioritisation strategy
 - Build your business case
 - Allocate / drive resources
 - Have fact based discussions with correspondents
 - Understand gpi reach (direct and indirect model)

Dedicated gpi adoption dashboard is included in Watch.

The customer can also use BI Services:

- Standard pack: Payment landscape ID card + gpi ID card
- Optional pack: Market analysis



Roll out – Watch products and BI services

Initiate your SWIFT gpi payments

How can BI help you?

- Analyse your gpi flows on a daily basis
- Look at your correspondents' flows
- Access SWIFT gpi totals on a monthly basis *
- Understand SWIFT gpi adoption in country corridors *
- Compare your traffic with other SWIFT gpi members *

Benefits:

- Monitor roll out strategy
- Ensure proper payments routing
- Initiate SWIFT gpi flows with new correspondents
- Support commercialisation strategy with corporates

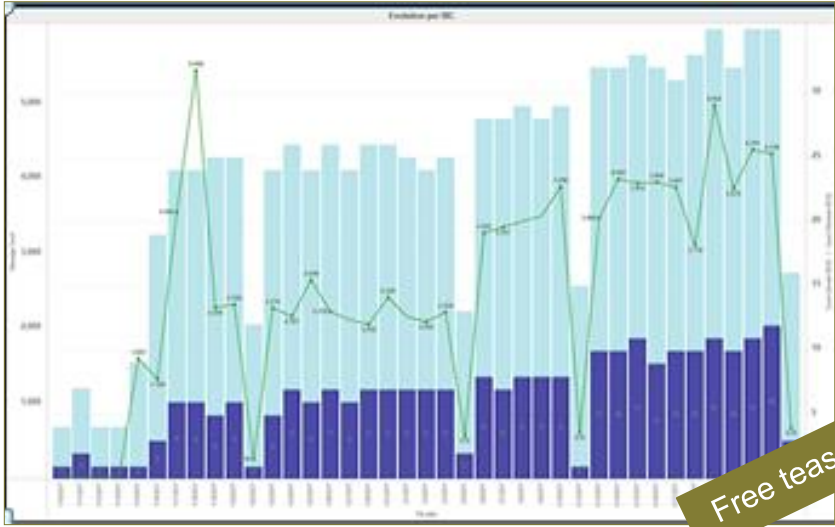
Daily data is available in **Watch** to monitor gpi adoption.

The customer can also use BI Services:

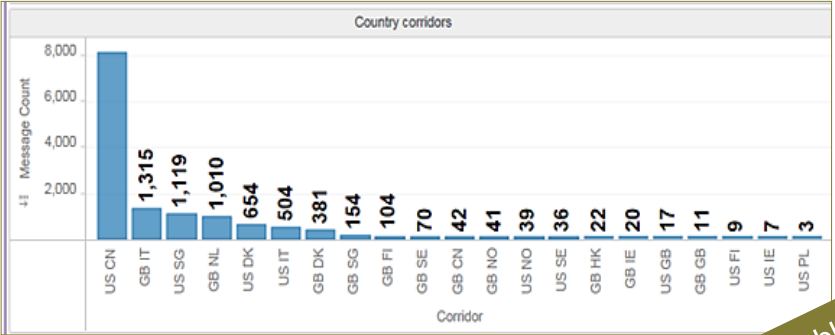
- Monthly in-depth SWIFT gpi analysis incl. daily traffic evolution during 12 months

* SWIFT totals are available if:

- more than 4 players in the country or country corridor
- two players do not represent more than 90% of the traffic



Free teaser



Payable



Roll out – Observer Insights

Observer Insights | your gpi quality index | gpi quality indexes of gpi community | User Documentation | About gpi | CELBUS33

gpi quality indexes of gpi community

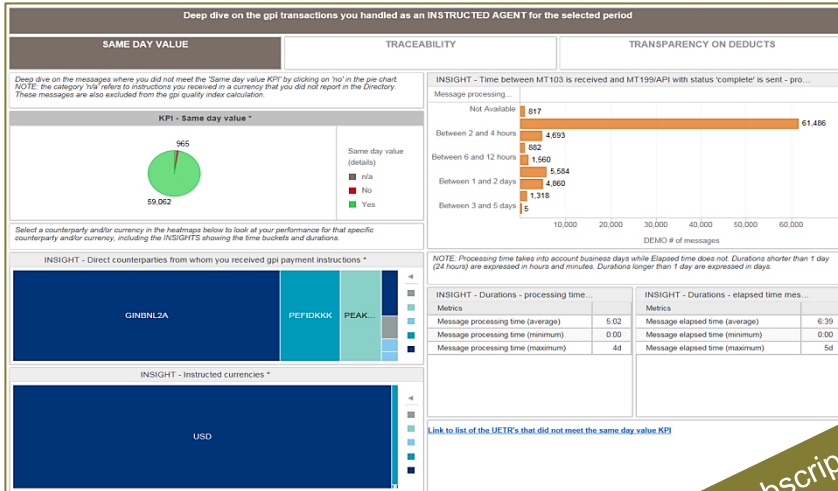
Community	Community Status	Community status duration (months)	gpi traffic you sent
PEAKCNBJ	Green	5	615,147
SDEBCNBJ	Green	5	143,207
GINBL2A	Green	5	139,902
GOCRITMM	Green	5	134,299
SUMMUS3N	Green	4	115,039
PREMBEBB	Green	5	88,327
CELBUS33	Green	5	76,968
SWUBUS3N	Green	3	70,877
ORIGITMM	Green	5	67,906
PUBAESMM	Green	5	67,096
MEFIDKOK	Green	5	65,696
BEBASGSG	Green	5	52,643

Legend:
 Green: gpi compliant
 Orange: gpi non-compliant (not visible to gpi community)
 Red: gpi non-compliant (visible to gpi community)

Monitor your global quality index

How can BI help you?

- Get a monthly view on your SWIFT gpi traffic depending on your role (Instructing, Intermediary or Instructed agent)
- Understand your SWIFT gpi global quality index: what are the different KPIs entering into the calculation
- Review SWIFT gpi community global quality index and monitor your counterparties' adherence to the rulebook



Benefits:

- Improve the quality of your SWIFT gpi flows
- Identify targeted areas for improvement
- Explore opportunities to work with new correspondents

The customer can also use BI Services:

- Workshop to understand how to use the gpi Observer (2 hours by webex)
- More BI services could be developed based on gpi customers' feedback

gpi subscription



gpi Observer Analytics



gpi Observer – from Insights to Analytics



Observer Insights

A global view of banks' adherence to the gpi gCCT rulebook (more SLAs to come)



Same day value



Traceability



Transparency on deducts



Unaltered remittance information



Observer Analytics

Unique data support your cross-border payments strategy



Analyse speed of specific routings



Move from message analysis to end-to-end payment routing analysis



Benchmarking against gpi community and identify gpi market practices



Advanced analysis of your gpi correspondents



Analytics on Speed

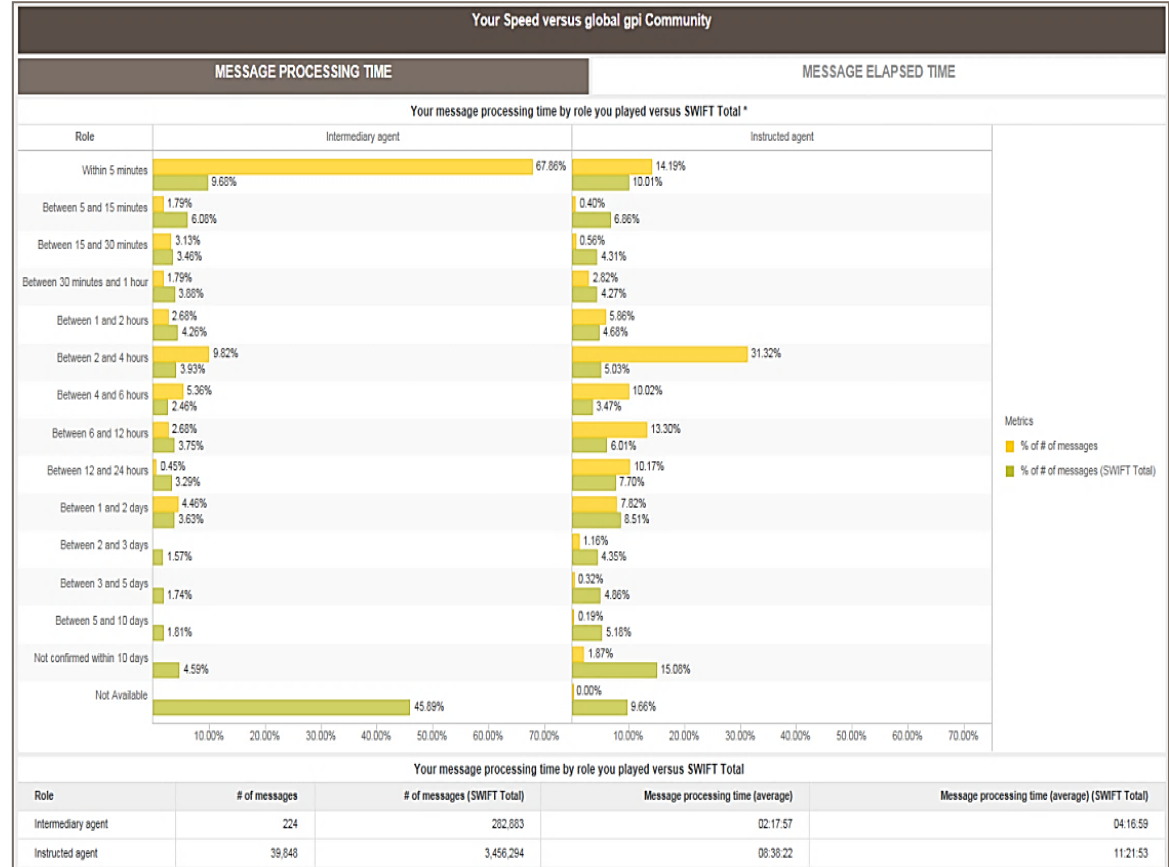


How can BI help you?

- Get insights into the durations of your end-to-end gpi transactions and compare these with the gpi community
- Analyse how fast you process gpi payments and benchmark your performance with the gpi community

Benefits:

- Adapt and monitor your operational back-end systems in terms of credit confirmations
- Identify if you are providing a better service to your customers (corporates or FIs) than your peers and fine-tune SLAs
- Spot additional potential improvements in your payment processes



Payment routing intelligence

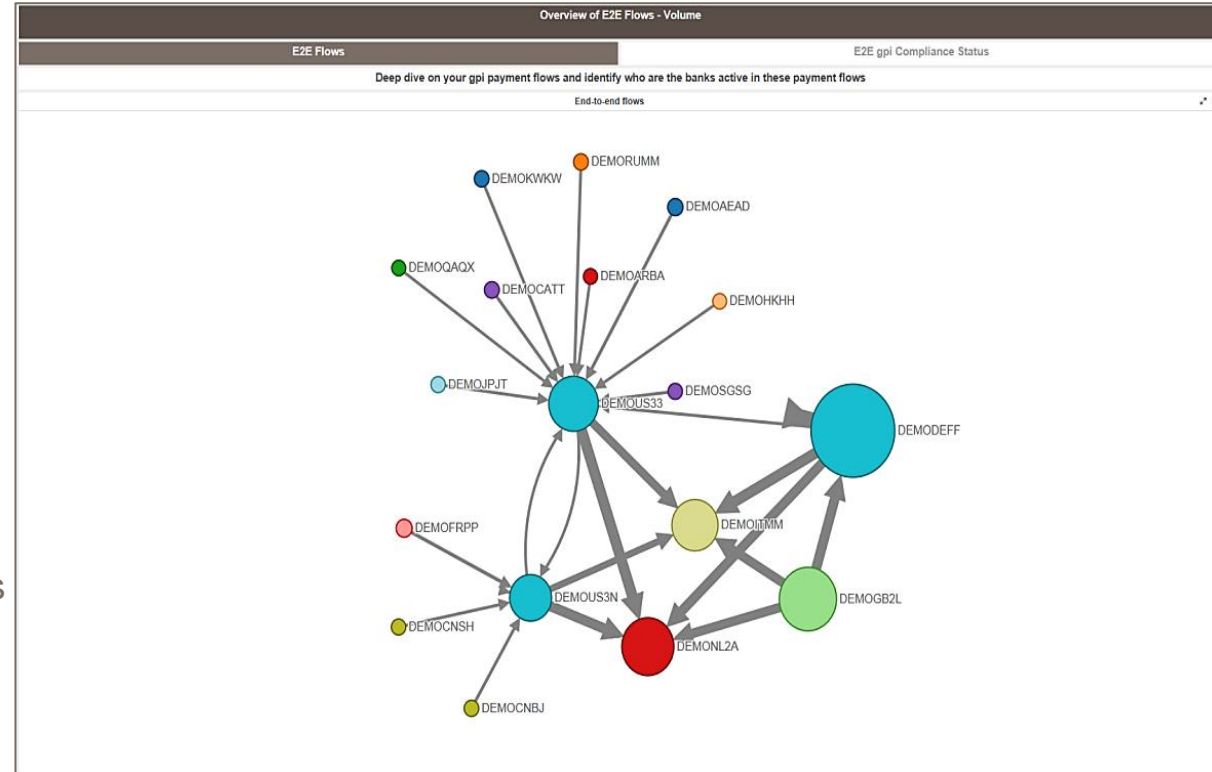


How can BI help you?

- Identify with a network diagram the overview of all FIs active in your gpi payment flows
- Who are your direct and indirect correspondents and are the most effective payment routes being followed to reach a specific country or correspondent

Benefits:

- Get a view on your currency clearing activities
- Analyse any outliers in correspondent banking flows
- Reduce costs for customers in end-to-end (E2E) routing



Benchmarking against gpi community



How can BI help you?

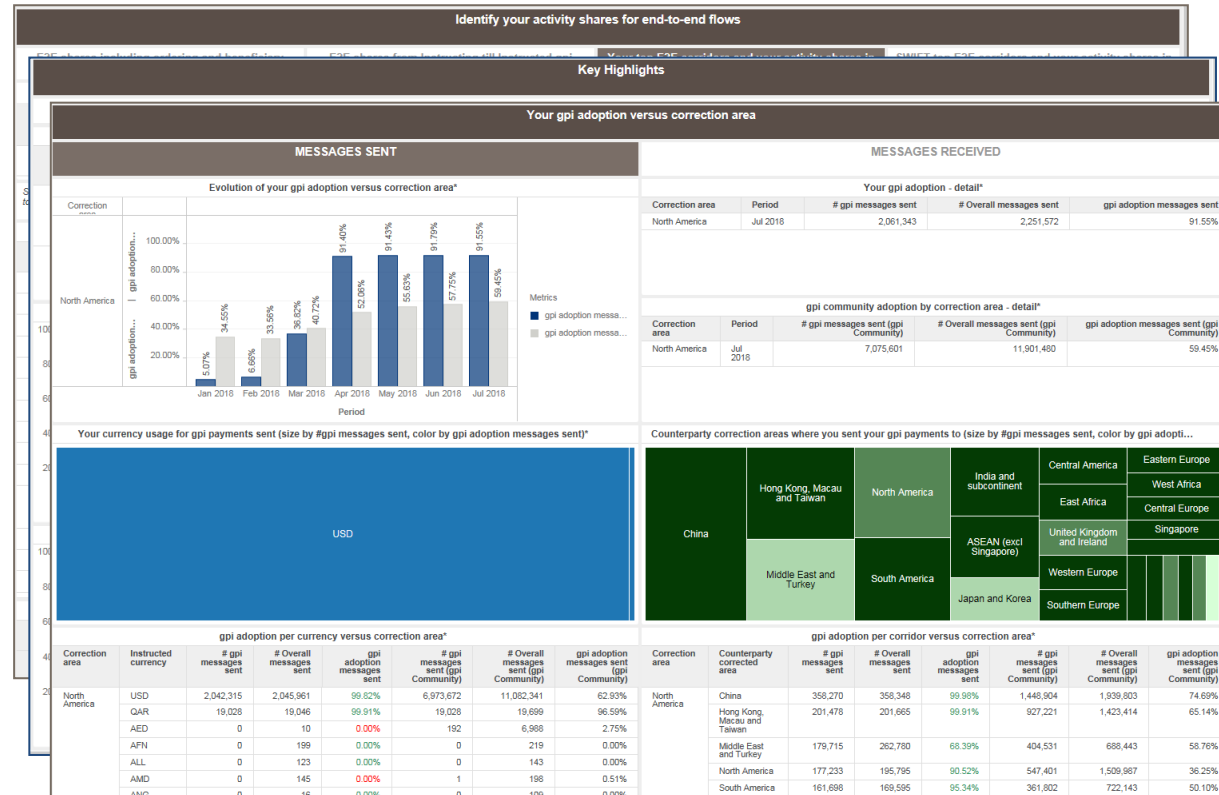
- Identify your gpi activity shares in your end-to-end and point-to-point payment corridors
- Gain insights on your growth in active and non-active corridors
- Benchmark your performance on the gpi characteristics with the gpi community and your peers in a specific sub region/country
- Discover your and the gpi community's gpi adoption rate to identify steer your gpi strategy

Benefits

- Identify new business opportunities by monitoring your gpi activity shares and your gpi adoption rate
- Improve market and competitive analysis



Business Intelligence solutions for gpi



Advanced analysis of direct correspondents

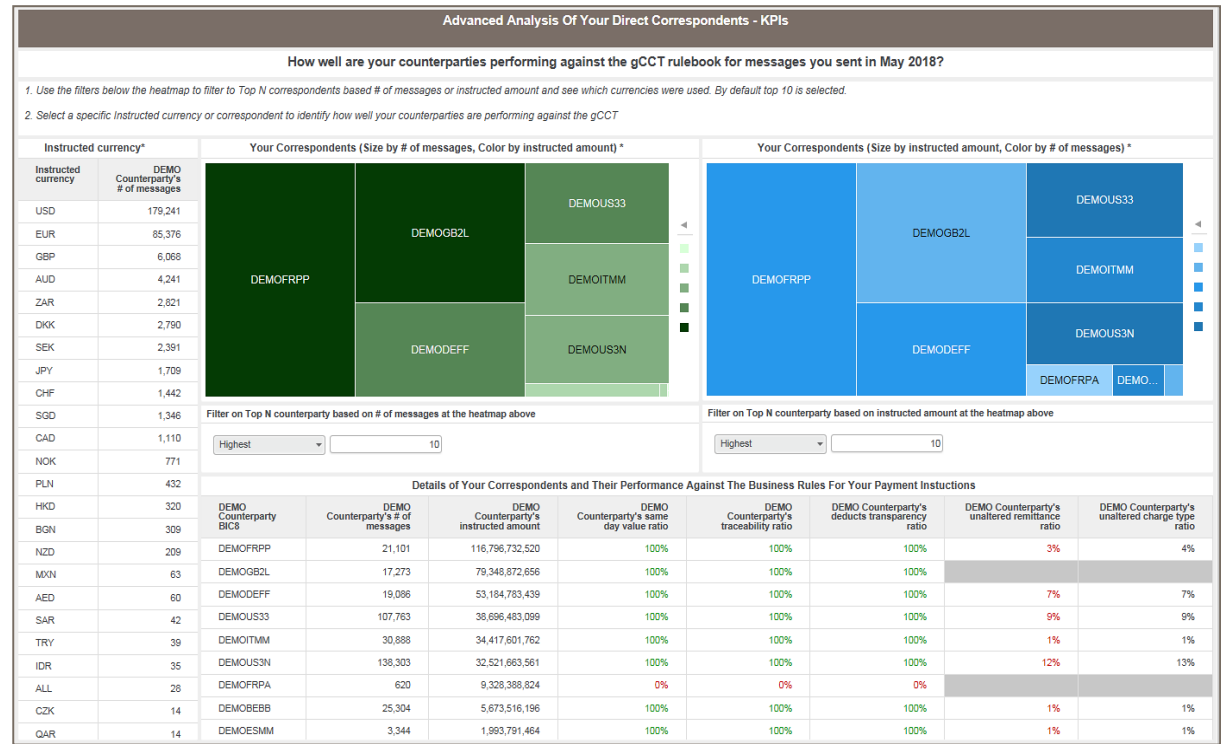


How can BI help you?

- Identify how well and how fast your correspondents are performing against the **gCCT rulebook** regarding your transactions analyse **how fast** your correspondents are processing your payment instructions
- Identify **how well** and **how fast** you are performing against the **gCCT rulebook** regarding the transactions you process

Benefits

- Assess SLAs with correspondents and their service quality
- Discover your service quality towards each of your correspondents and potential areas for improvement and vice versa



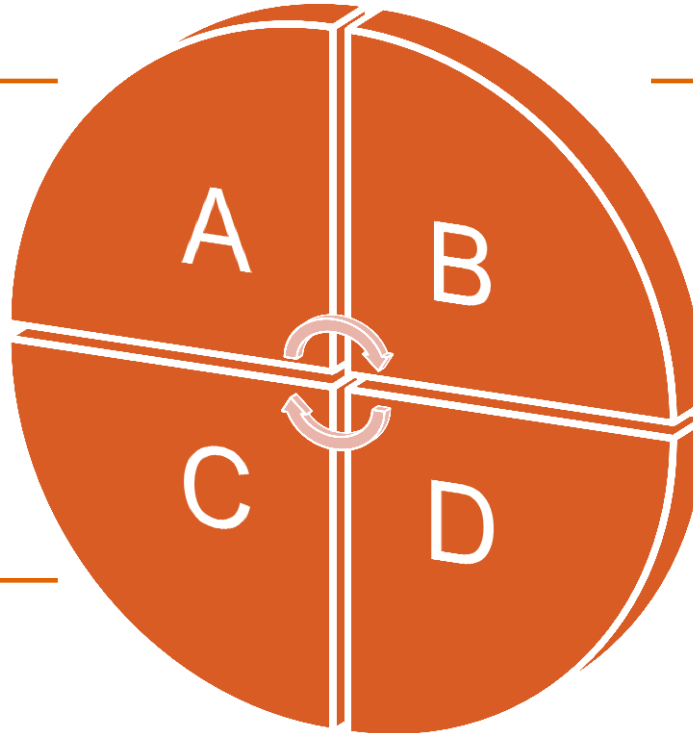
Observer Analytics – Key benefits

Improved market and competitive analysis

Act upon fact-based information to steer your institution's gpi strategy through improved market and competitive analysis

Improve your value proposition

Improve your value proposition towards your customers by reducing customer charges and, at the same time, offering faster end-to-end routings



Optimise your payment routings

Optimise your payment routings and fine-tune SLAs with correspondents, leading to lower cost and faster payments

Identify new business opportunities

Identify new business opportunities by monitoring your gpi activity share





Questions?

Please contact us at gpi.observer@swift.com or visit swift.com/BI



The screenshot shows a Cisco Q&A interface. At the top, there are tabs for 'Participants', 'Chat', and 'Q&A'. Two red arrows point to the 'Participants' and 'Q&A' tabs. Below the tabs, there is a list of participants, including 'Judith Giel' and 'Bruno Coopmans'. A red arrow points to the 'All Panelists' dropdown menu in the 'Ask:' field. Below the dropdown, there is a text input field with the placeholder text 'Type your questions here!' and a 'Send' button. A red arrow points to this input field. At the bottom right, there is a status bar showing 'Connected' and the Cisco logo.

Find out more about Watch



Learn more on our e-training platform:

[SWIFT Smart](#)

Dedicated e-trainings on Watch and Observer. Products available.
Access to this module is only available for swift.com registered users.

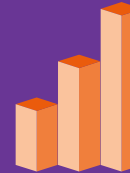


[SWIFT Business Intelligence](#)

[Watch documentation](#)



[Customer Support](#)



Sign up to receive [BI Newsletters](#)



[SWIFT Business Intelligence for Transaction Banking](#)



Send us your feedback
at gpi.observer@swift.com





www.swift.com