



# A guide to visuals in Traffic Analytics

*Payments dashboard – my counterparty groups*

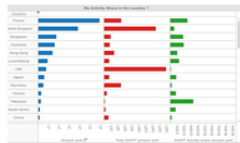
Business Intelligence solutions, Watch team

June 2017

# My Counterparty Groups

Use this dashboard to:

- ✓ Identify your top counterparties
- ✓ Monitor your traffic to and from your counterparties
- ✓ Understand your Payments business with your counterparties



**Dynamic and  
Easy to use**

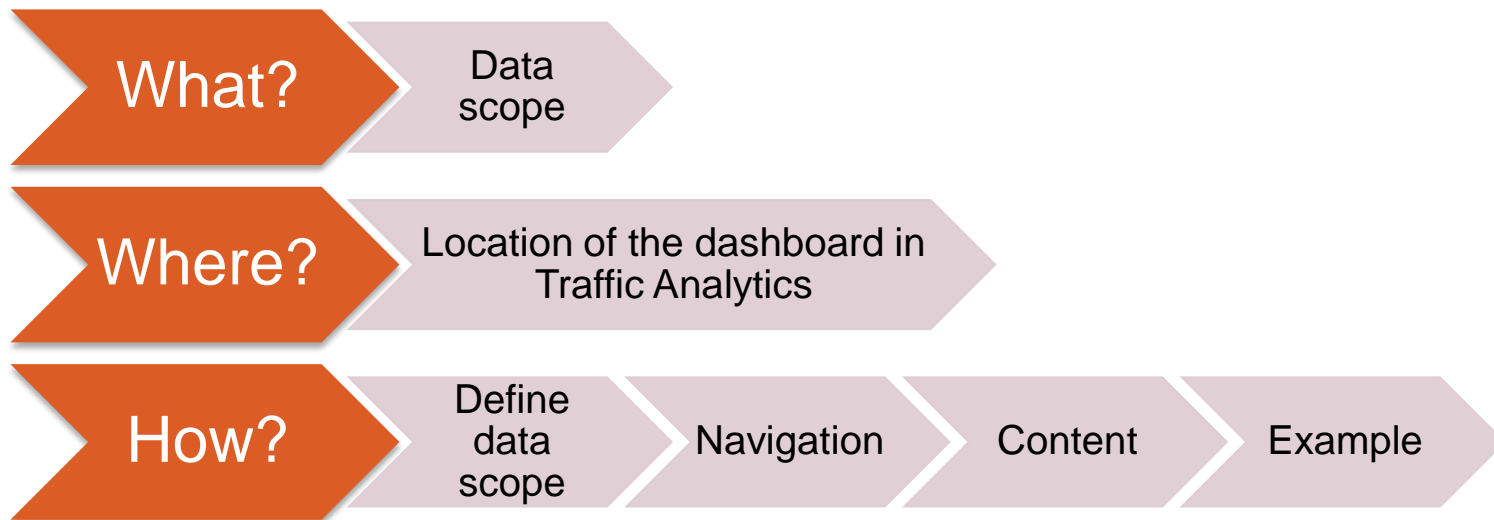
**Business  
Focus** State of the art  
visuals

**Filtering and Calculations**

**Immediate  
Insights**



# Payments Dashboard – My Counterparty Groups



# What?

## Payments Dashboard– My Counterparty Groups

### Data scope:

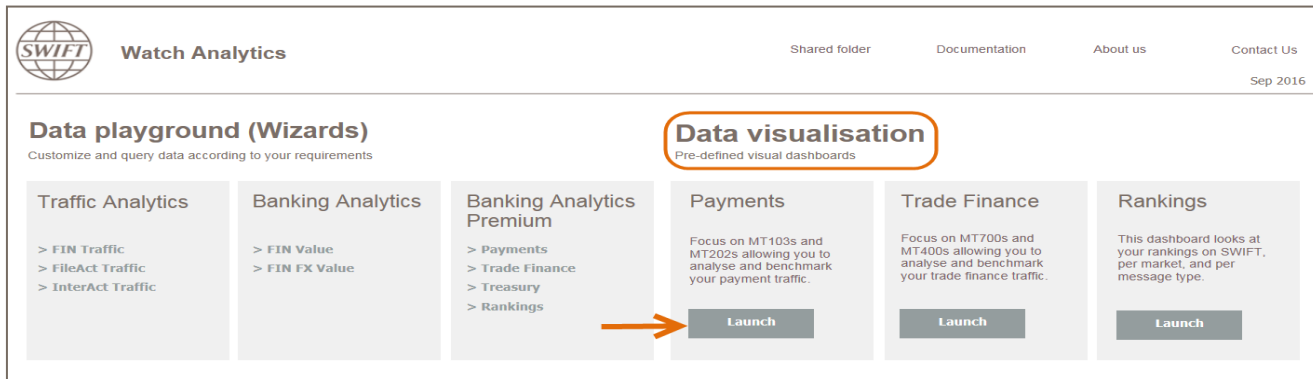
- MT103s, MT202 and MT202COV
- Live and delivered message
- Sent and received

### What do I get from this dashboard?

- List of all of my counterparty groups
- Monthly evolution of traffic to/from counterparty groups
- Message types used

# Where?

## Locating the dashboard



**Watch Analytics** Shared folder Documentation About us Contact Us  
Sep 2016

**Data playground (Wizards)**  
Customize and query data according to your requirements

**Data visualisation**  
Pre-defined visual dashboards

- Traffic Analytics**
  - > FIN Traffic
  - > FileAct Traffic
  - > InterAct Traffic
- Banking Analytics**
  - > FIN Value
  - > FIN FX Value
- Banking Analytics Premium**
  - > Payments
  - > Trade Finance
  - > Treasury
  - > Rankings
- Payments**

Focus on MT103s and MT202s allowing you to analyse and benchmark your payment traffic.

**Launch**
- Trade Finance**

Focus on MT700s and MT400s allowing you to analyse and benchmark your trade finance traffic.

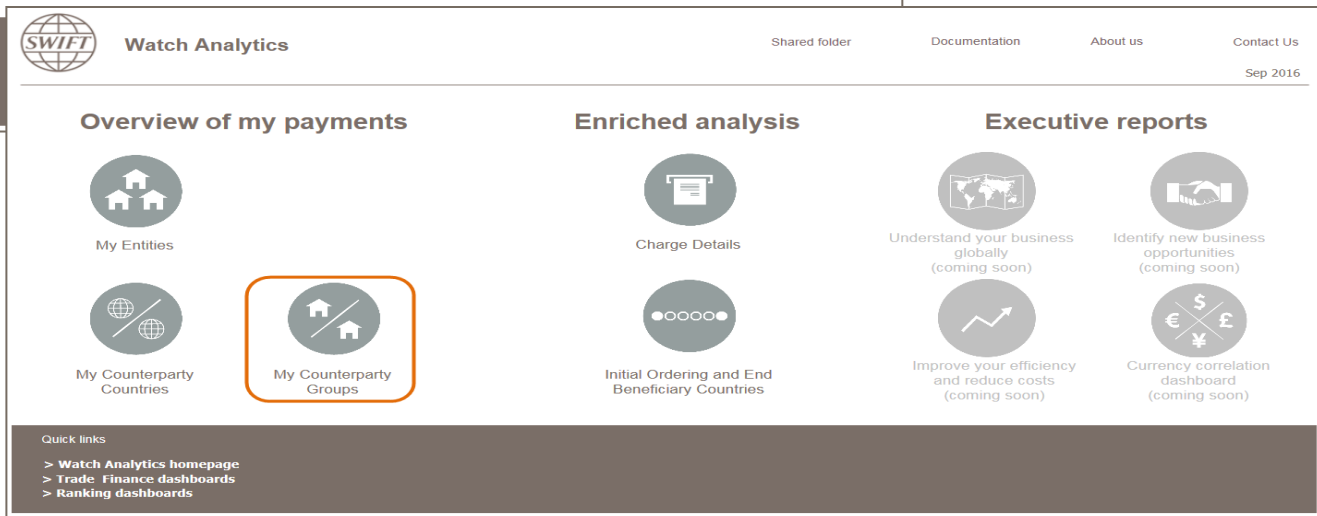
**Launch**
- Rankings**

This dashboard looks at your rankings on SWIFT, per market, and per message type.

**Launch**

Quick links

- > [Go back to folder view](#)
- > [Billing Analytics](#)
- > [Message Cost Analytics](#)



**Watch Analytics** Shared folder Documentation About us Contact Us  
Sep 2016

**Overview of my payments**

- My Entities
- My Counterparty Countries
- My Counterparty Groups**

**Enriched analysis**

- Charge Details
- Initial Ordering and End Beneficiary Countries

**Executive reports**

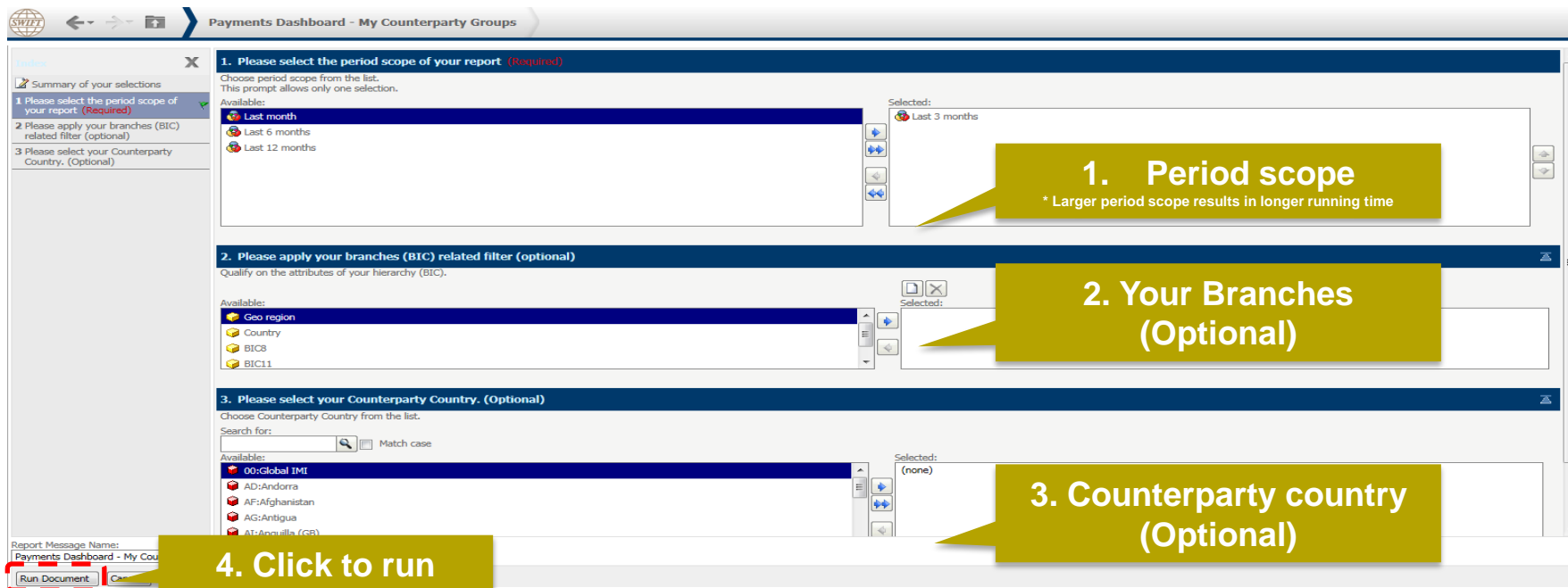
- Understand your business globally (coming soon)
- Identify new business opportunities (coming soon)
- Improve your efficiency and reduce costs (coming soon)
- Currency correlation dashboard (coming soon)

Quick links

- > [Watch Analytics homepage](#)
- > [Trade Finance dashboards](#)
- > [Ranking dashboards](#)

# How?

## Defining data scope



**1. Period scope**  
\* Larger period scope results in longer running time

**2. Your Branches (Optional)**

**3. Counterparty country (Optional)**

**4. Click to run**

The screenshot shows the 'Payments Dashboard - My Counterparty Groups' interface. It features a left-hand navigation pane with a 'Index' section containing three steps: '1. Please select the period scope of your report (Required)', '2. Please apply your branches (BIC) related filter (optional)', and '3. Please select your Counterparty Country. (Optional)'. The main content area is divided into three sections corresponding to these steps. Step 1 shows a list of available period scopes: 'Last month', 'Last 6 months', and 'Last 12 months', with 'Last 3 months' selected. Step 2 shows a list of available branches: 'Geo region', 'Country', 'BIC8', and 'BIC11', with 'Geo region' selected. Step 3 shows a search for counterparty countries, with '00:Global IMI' selected. At the bottom, a 'Run Document' button is highlighted with a red dashed box and a yellow callout.

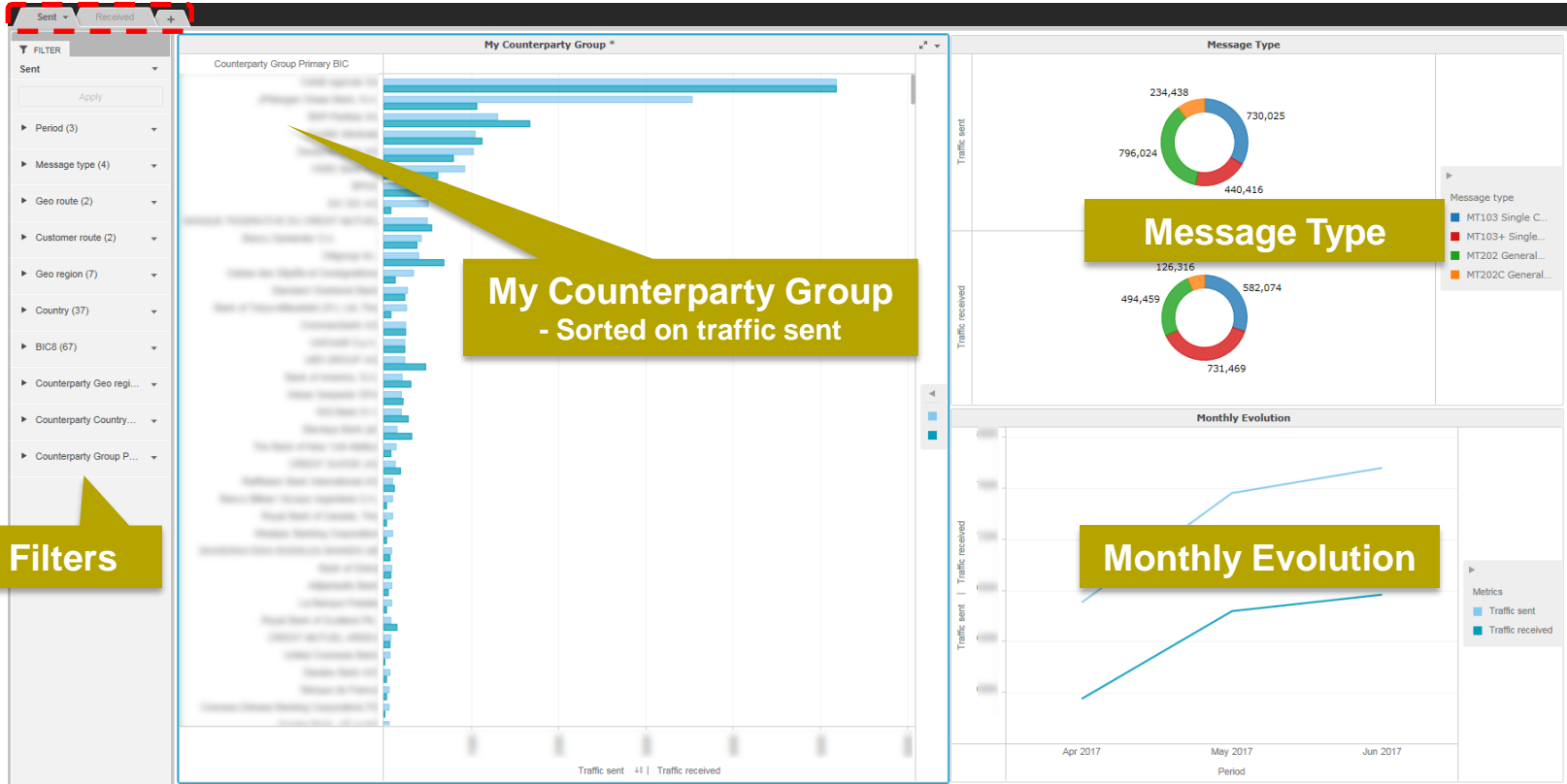
# How?

## Navigating in the dashboard



# How?

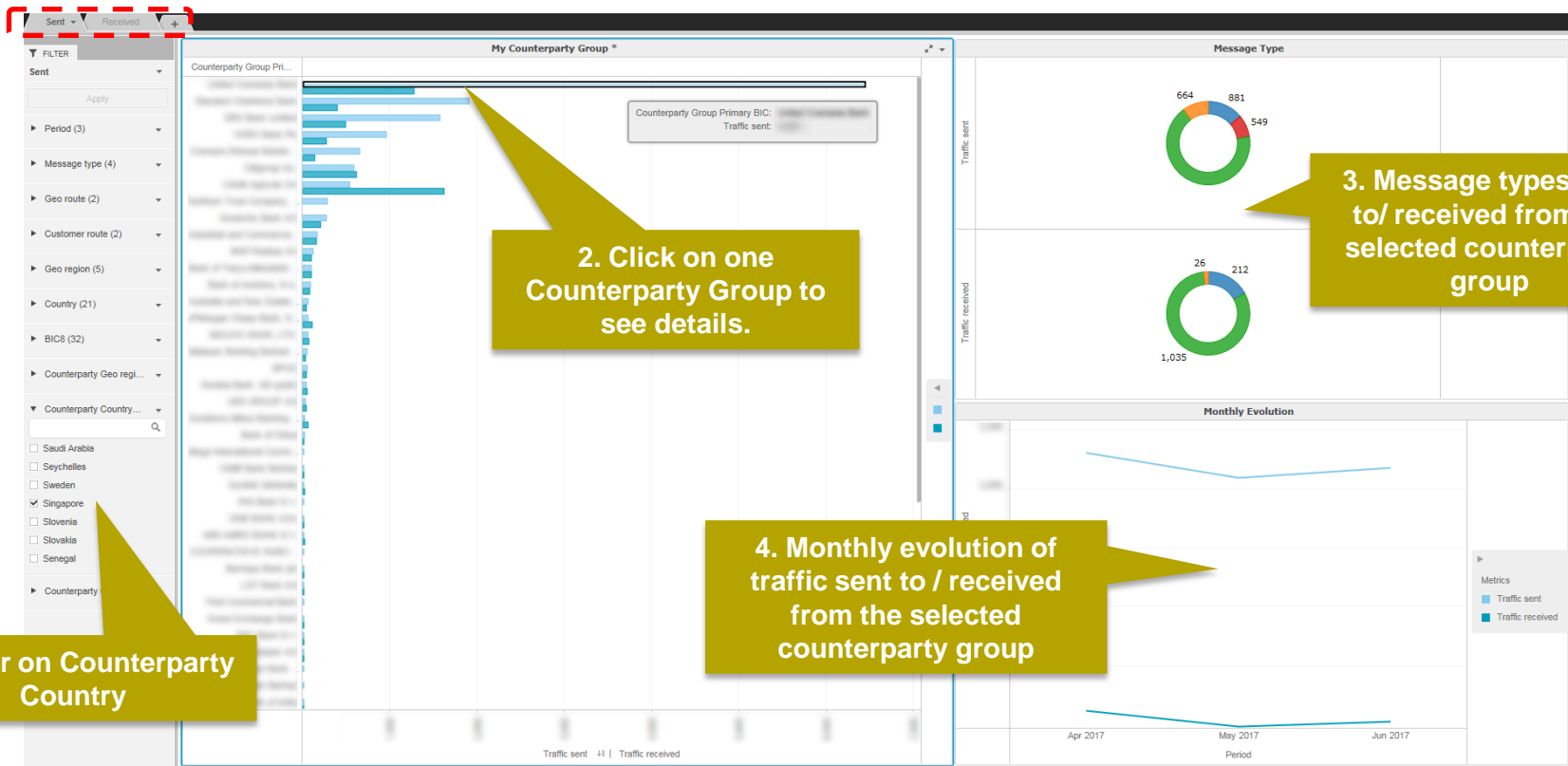
## How to read the dashboard?





# How?

# Who are my main counterparties in Singapore?



1. Filter on Counterparty Country

2. Click on one Counterparty Group to see details.

3. Message types sent to/ received from the selected counterparty group

4. Monthly evolution of traffic sent to / received from the selected counterparty group



# Find out more about Watch here



Learn more on our e-training platform: [SWIFT Smart](#)

Access to this module is only available for swift.com registered users.  
**Dedicated e-trainings on Watch Products available**



[Customer Support](#)



[Business Intelligence](#)  
[Transaction Banking](#)



[SWIFT Business Intelligence](#)

[Watch documentation](#)



Documentation available on the [Watch platform](#)



Provide us your feedback at [watch@swift.com](mailto:watch@swift.com)



[www.swift.com](http://www.swift.com)