



RMA Usage Review and Removal Service

Achieve better correspondent monitoring

Managing and controlling your business relationships is of primary importance. With SWIFT, this is done via the exchange of [Relationship Management Application \(RMA\) keys](#), enabling the exchange of SWIFT FIN traffic between two institutions.

Benefits

- Review inbound and outbound RMA usage by correspondent
- Avoid unwanted traffic
- Reduce maintenance cost and risk by identifying dormant or unused business relationships
- Access to business intelligence data to make fact-based decisions
- Automated and reliable removal of unwanted RMA records

Learn more

To learn more about RMA follow our two [SWIFTSmart curricula](#) to learn the basics of RMA and how to operate the Alliance Relationship Management GUI.

Contact us

For further information about RMA Usage Review and Removal Service please contact your account manager, your [local SWIFT office](#) or visit www.swift.com.

Having a view on your RMA authorisations can serve as a very effective first line of defence against undesirable or unexpected transaction flows. Equally important, an unknown RMA relationship is potentially an open door for transactions that you might not even be aware of and that could potentially mitigate your institutions' operational excellence.

The challenges many institutions currently face is that RMA usage has grown over time and may not be aligned or conform to your internal compliance processes. With the current emphasis on risk management practices in Correspondent Banking, it is critical to perform a regular, thorough review of all RMA authorisations. For those financial institutions maintaining relationships with hundreds or thousands of correspondents, typically operating globally, this can represent a sizeable effort and cost burden.

This is where SWIFT can leverage the expertise of its consultants and perform analysis of centralised traffic information to help an organisation facilitate and greatly accelerate this mission.

RMA usage review

[SWIFT Services](#) can support your institution in ensuring you do not mistakenly send or receive FIN messages to or from unwanted correspondents.

SWIFT's RMA usage review consists of providing your institution with a comprehensive file (Figure 1) listing all your counterparties, enabled inbound and outbound RMAs and the type of traffic exchanged, together with volume of traffic and when the last transaction with that counterparty occurred.

- Create a list of your correspondents

with whom authenticated messages are exchanged (Figure 1);

- Access to relevant information on the traffic exchanged with your correspondents (dates, volumes, nature, direction) for the last 12 months;
- Identify unused, dormant and inactive RMA authorisations and mark them as attention points (Figure 2);
- Compare your performance regarding dormant and inactive RMAs with your peers;
- Review usage and presence of RMA Plus.

With these thorough RMA assessments, your institution now has all the necessary information in hands to perform the clean-up of RMA relationships.

However, you can also choose to get assistance for removing RMA relationships and request a "RMA removal service."

RMA removal service

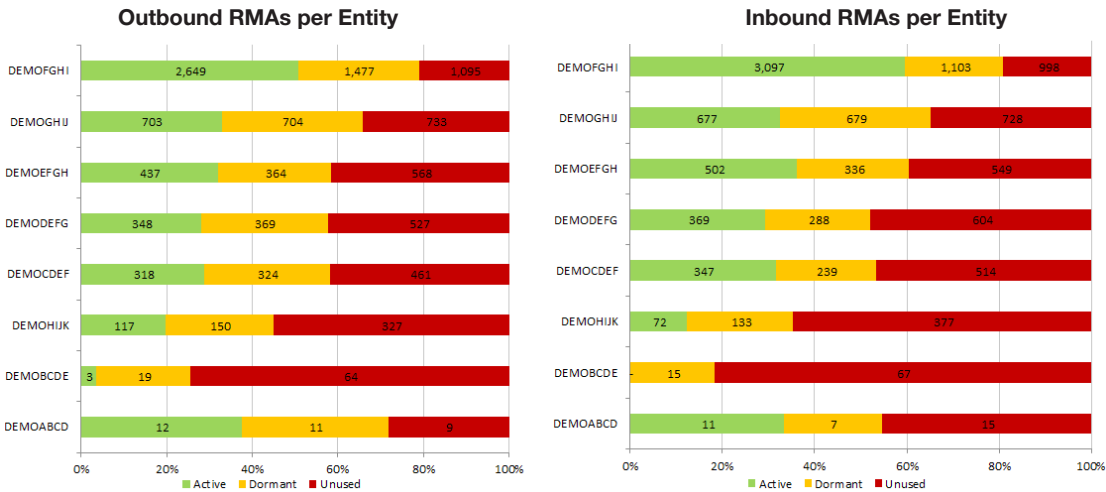
Additionally to the RMA usage review, SWIFT Services can also perform the removal of your RMA relationships on your behalf. This service helps you perform the following activities with peace of mind:

- Helping you notify your correspondents of your intention to remove the RMA keys;
- After your approval, deleting the highlighted RMA authorisations by creating the necessary RMA messages.

RMA - Inbound & Outbound - Valid RMAs vs Authenticated MTs (excl. Test)

Last data month : May-16				Outbound RMA's (Authorization to receive)							Inbound RMA's (Authorization to send)						
Your BIC	Correspondent BIC	Corr. FIN Network	Correspondent Country	MT Cat Rec	Outbound RMA's	YTD	Rec. Last period	Rec. Status	RMA +	RMA Status	MT Cat Sent	Inbound RMA's	Sent FY 2016	Sent Last period	Sent Status	RMA +	RMA Status
DEMONNDN	CTPYGLAG	Active	Italy	-----	Outbound	-	No Traffic	Unused		Enabled	-----	Inbound	-	No Traffic	Unused		Enabled
DEMONNDN	CTPYIIBI	Inactive	Portugal	-----	Outbound	-	No Traffic	Unused		Enabled	-----	Inbound	-	No Traffic	Unused		Enabled
DEMONNDN	CTPYSLBS	Active	Chile	---5---	Outbound	12,462	May-16	Active	Y	Enabled	--3-5---	Inbound	12,429	May-16	Active	Y	Enabled
DEMONNDN	CTPYHGCH	Active	Luxembourg	1-2-5---	Outbound	63	May-16	Active		Enabled	-2-5---	Inbound	-	Nov-14	Dormant		Enabled
DEMONNDN	CTPYIGCI	Active	Chile	1-2-5---	Outbound	1,296	May-16	Active		Enabled	1-2-3-5	Inbound	1,754	May-16	Active		Enabled
DEMONNDN	CTPYKICI	Active	Argentina	1-----	Outbound	-	Nov-15	Active		Enabled	-----	Inbound	-	No Traffic	Unused		Enabled
DEMONNDN	CTPYIUCI	Active	Italy	1-----	Outbound	4	Jan-16	Active		Enabled	---5---	Inbound	1,892	May-16	Active		Enabled
DEMONNDN	CTPYNGCN	Active	Argentina	---5---	Outbound	33	May-16	Active		Enabled	---5---	Inbound	39	May-16	Active		Enabled
DEMONNDN	CTPYNGCN	Active	Chile	---5---	Outbound	191	May-16	Active		Enabled	1-2-5---	Inbound	145	May-16	Active		Enabled
DEMONNDN	CTPYNUCN	Active	Chile	1-----	Outbound	-	Mar-11	Dormant		Enabled	-----	Inbound	-	No Traffic	Unused		Enabled
DEMONNDN	CTPYEGDE	Active	Bangladesh	---5---	Outbound	385	May-16	Active		Enabled	-2-3-5---	Inbound	19	May-16	Active		Enabled
DEMONNDN	CTPYNNDN	Active	Indonesia	-2-----	Outbound	-	Jan-11	Dormant		Enabled	-2-----	Inbound	-	Jan-11	Dormant		Enabled
DEMONNDN	CTPYNNDN	Inactive	Croatia	1-----	Outbound	-	Feb-11	Dormant		Enabled	1-----	Inbound	-	Sep-11	Dormant		Enabled
DEMONNDN	CTPYNNDN	Active	Italy	-2-5---	Outbound	-	Sep-13	Dormant		Enabled	-----	Inbound	-	No Traffic	Unused		Enabled
DEMONNDN	CTPYNNDN	Active	Sri Lanka	1-2-----	Outbound	-	Sep-13	Dormant		Enabled	-----	Inbound	-	No Traffic	Unused		Enabled
DEMONNDN	CTPYNSDN	Active	Romania	-2-----	Outbound	-	Feb-09	Dormant		Enabled	-2-----	Inbound	-	Dec-15	Active		Enabled
DEMONNDN	CTPYSNES	Active	Spain	-----	Outbound	-	No Traffic	Unused		Enabled	-	Inbound	-	No Traffic	Unused		Enabled
DEMONNDN	CTPYSES	Active	Czech Republic	-----	Outbound	-	No Traffic	Unused		Enabled	-2-5---	Inbound	34,137	May-16	Active		Enabled
DEMONNDN	CTPYSES	Active	Slovakia	1-2-5---	Outbound	61,503	May-16	Active		Enabled	1-2-5---	Inbound	-	Nov-13	Dormant		Enabled
DEMONNDN	CTPYOUGO	Active	Australia	-----	Outbound	-	No Traffic	Unused		Enabled	-----	Inbound	-	No Traffic	Unused	Y	Enabled
DEMONNDN	CTPYGGGS	Active	Chile	1-----	Outbound	-	Nov-08	Dormant		Enabled	-----	Inbound	-	No Traffic	Unused		Enabled
DEMONNDN	CTPYASHA	Active	Japan	---5---	Outbound	341	May-16	Active	Y	Enabled	-2-5---	Inbound	-	Nov-15	Active		Enabled
DEMONNDN	CTPYGJJP	Active	Singapore	-----	Outbound	-	No Traffic	Unused		Enabled	-----	Inbound	-	No Traffic	Unused		Enabled
DEMONNDN	CTPYDDND	Active	Germany	1-5---	Outbound	-	Dec-09	Dormant		Enabled	1-2-5---	Inbound	-	Apr-09	Dormant		Enabled
DEMONNDN	CTPYDFND	Active	Russia	-2-----	Outbound	-	Feb-09	Dormant		Enabled	-----	Inbound	-	No Traffic	Unused		Enabled
DEMONNDN	CTPYDNND	Active	Chile	1-----	Outbound	-	Mar-12	Dormant		Enabled	1-----	Inbound	-	Nov-08	Dormant		Enabled
DEMONNDN	CTPYBGRB	Active	Germany	1-----	Outbound	-	Sep-09	Dormant		Enabled	-----	Inbound	-	No Traffic	Unused		Enabled

▲ Figure 1 – List of correspondents with which authenticated messages are exchanged (dummy data)



▲ Figure 2 – Get a summary on the status of all RMAs (by branch)



▲ Figure 3 – In orange = where SWIFT can help you. In grey = your institution's responsibilities