



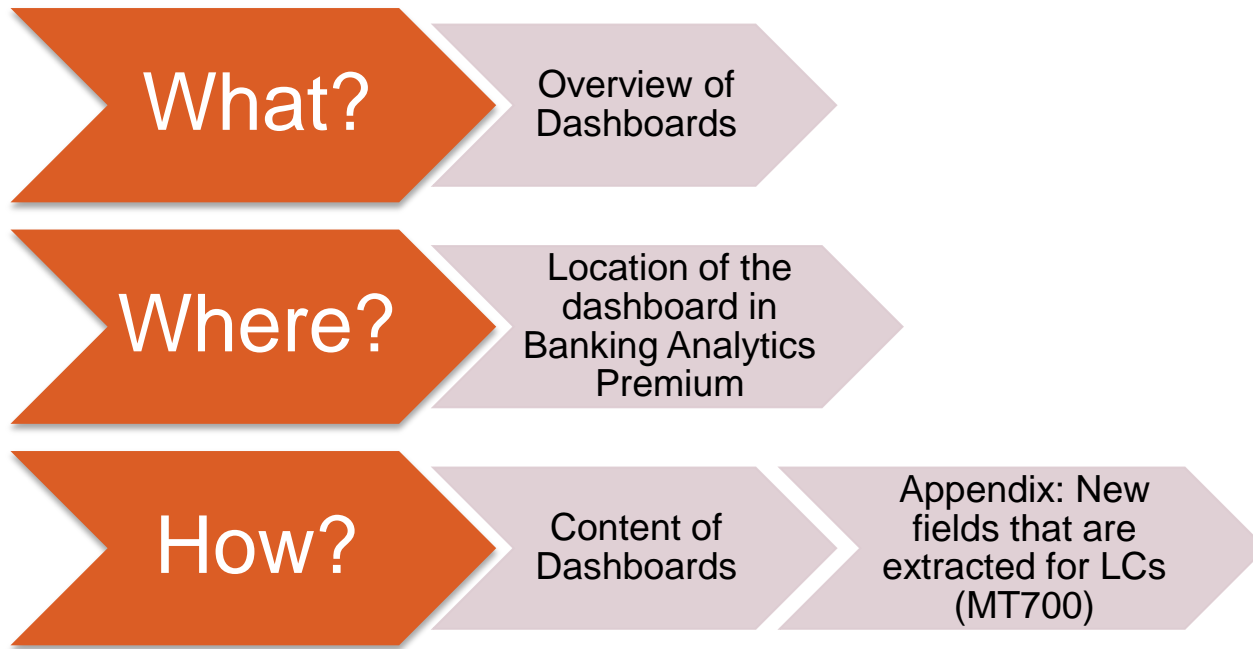
# Banking Analytics Premium Dashboard User Guides

Trade Finance Dashboards – Enriched Analysis

SWIFT Business Intelligence Solutions

June 2017

# Trade Finance Dashboard – Enriched Analysis



# What?

## Trade Finance Dashboard – Enriched Analysis

### Import L/C Confirmation\*

- This dashboard allows you to understand and benchmark your Confirmation Instruction of **Import LCs (MT700)**

### Export L/C Confirmation\*

- This dashboard allows you to understand and benchmark your Confirmation Instruction of **Export LCs (MT700)**

*\*The user guide for both is the same*



# Where?

## Locating the dashboard

**Watch Analytics** Shared folder Documentation About us Contact Us

**Data playground (Wizards)**  
Customize and query data according to your requirements

**Data visualisation**  
Pre-defined visual dashboards

- Traffic Analytics**
  - > FIN Traffic
  - > FileAct Traffic
  - > InterAct Traffic
- Banking Analytics**
  - > FIN Value
  - > FIN FX Value
- Banking Analytics Premium**
  - > Payments
  - > Trade Finance
  - > Treasury
  - > Rankings
- Payments**  
Focus on MT103s and MT202s allowing you to analyse and benchmark your payment traffic. **Launch**
- Trade Finance**  
Focus on MT700s and MT400s allowing you to analyse and benchmark your trade finance traffic. **Launch**
- Rankings**  
This dashboard looks at your rankings on SWIFT, per market, and per message type. **Launch**

**Quick links**

- > Go back to folder view
- > Billing Analytics
- > Message Cost Analytics

**Watch Analytics** Shared folder Documentation About us Contact Us

**Overview of Trade Finance**

- My Entities**
- My Counterparty Countries**
- My Counterparty Groups**
- Enriched analysis**
  - Import L/C Confirmation
  - Export L/C Confirmation
- Executive reports**
  - Understand your business globally
  - Identify new business opportunities
  - Improve efficiency and reduce cost

**Quick links**

- > Watch Analytics homepage
- > Payments dashboards
- > Ranking dashboards



# Letter of Credit - Confirmation Dashboard

2 tabs: Transactions and Amounts | 4 panels: Overview, Ctpy. Country, Value buckets, LC duration length buckets

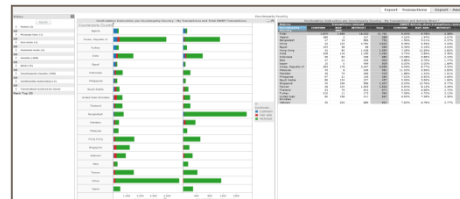
## Panels

Overview



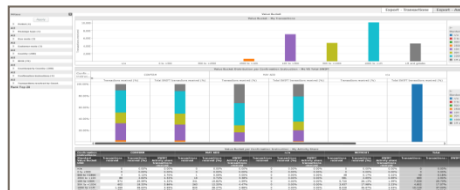
This tab gives an overview of my **confirmation instructions** practice and enables me to benchmark my practice against the Total SWIFT (market). **Monthly evolution** is available on the right.

Counterparty Country



This tab lists my **confirmation instructions** per top **counterparty countries** compared to Total SWIFT confirmation instructions. I will be able to **benchmark** my confirmation instructions and monitor my **activity share** in confirmed LC's.

Value Buckets



This tab shows my overall **value buckets** and my value buckets per confirmation instruction. It enables me to identify my **activity share in high value payments**.

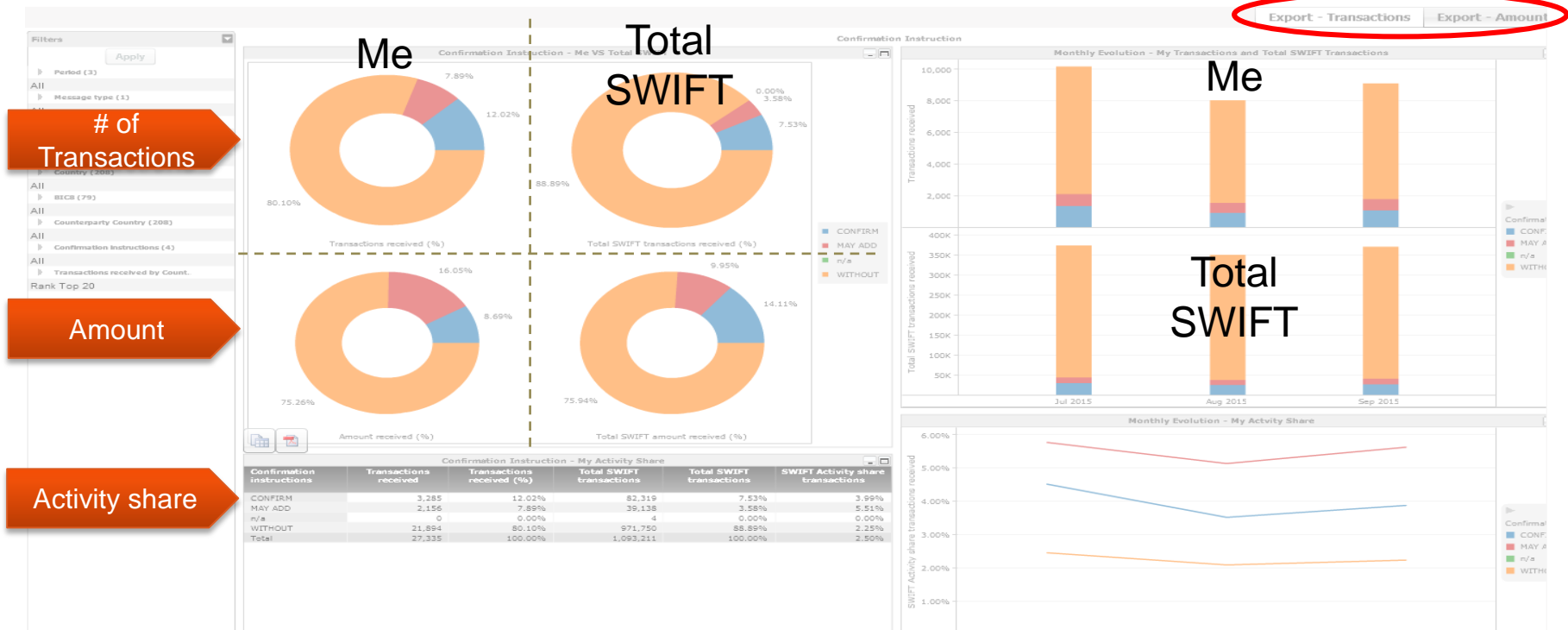
LC duration length buckets



This tab shows my overall **LC duration length split per bucket** and my LC length per confirmation instruction. I will be able to benchmark against the Total SWIFT (market).

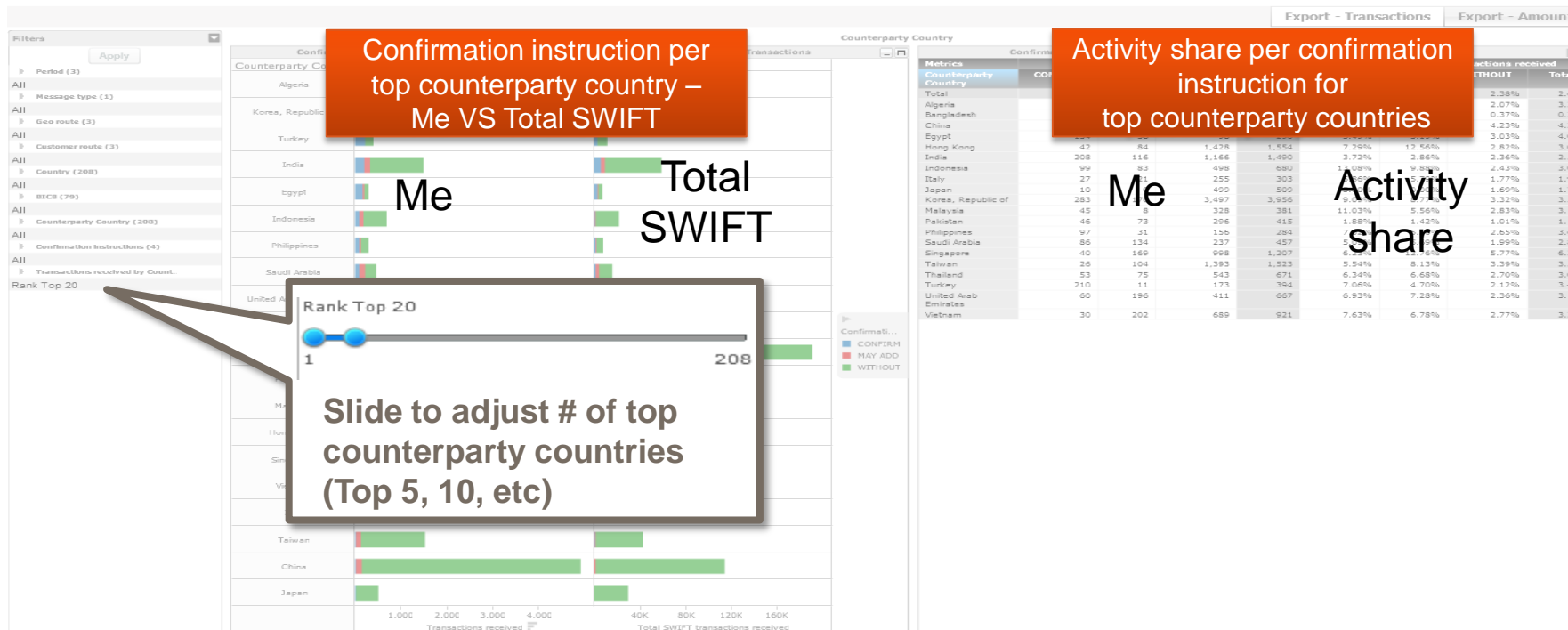
# Overview

An overview of my charging practice, monthly evolution, benchmark and activity share



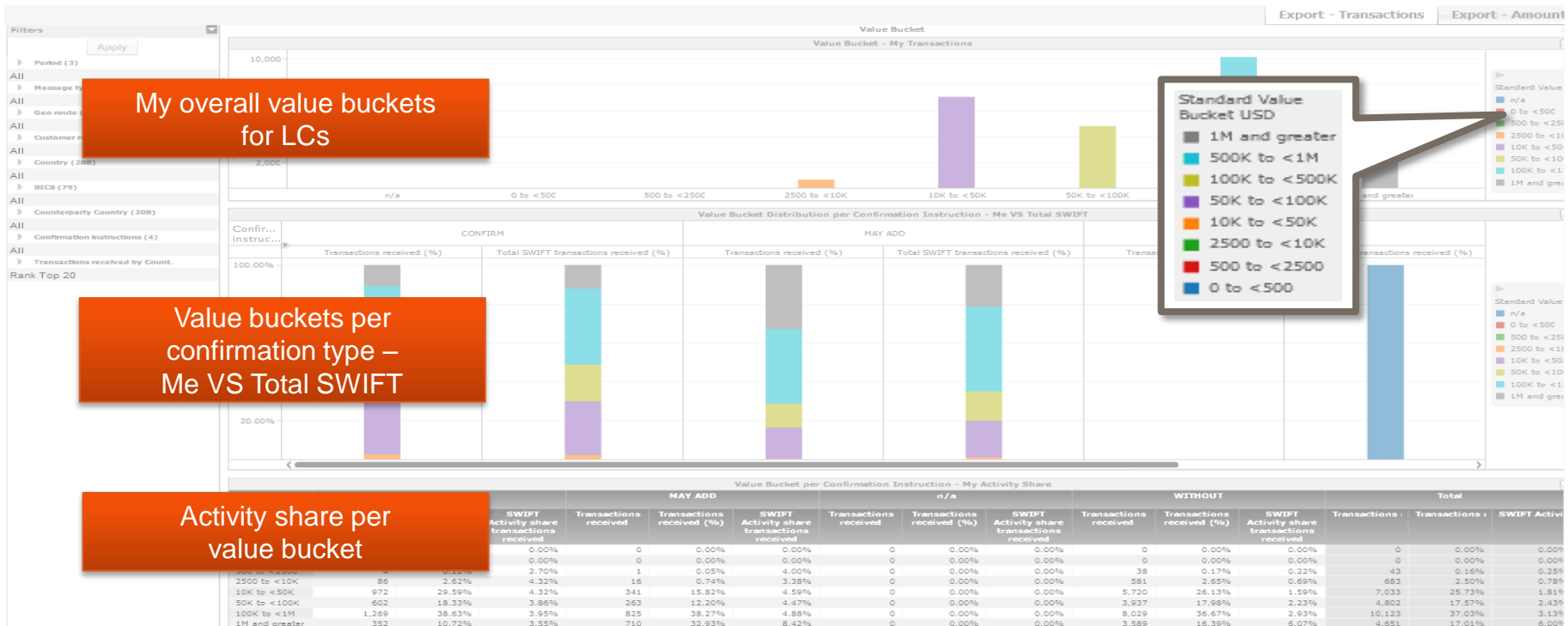
# Counterparty Country

Benchmark my confirmation instructions per counterparty country



# Value buckets

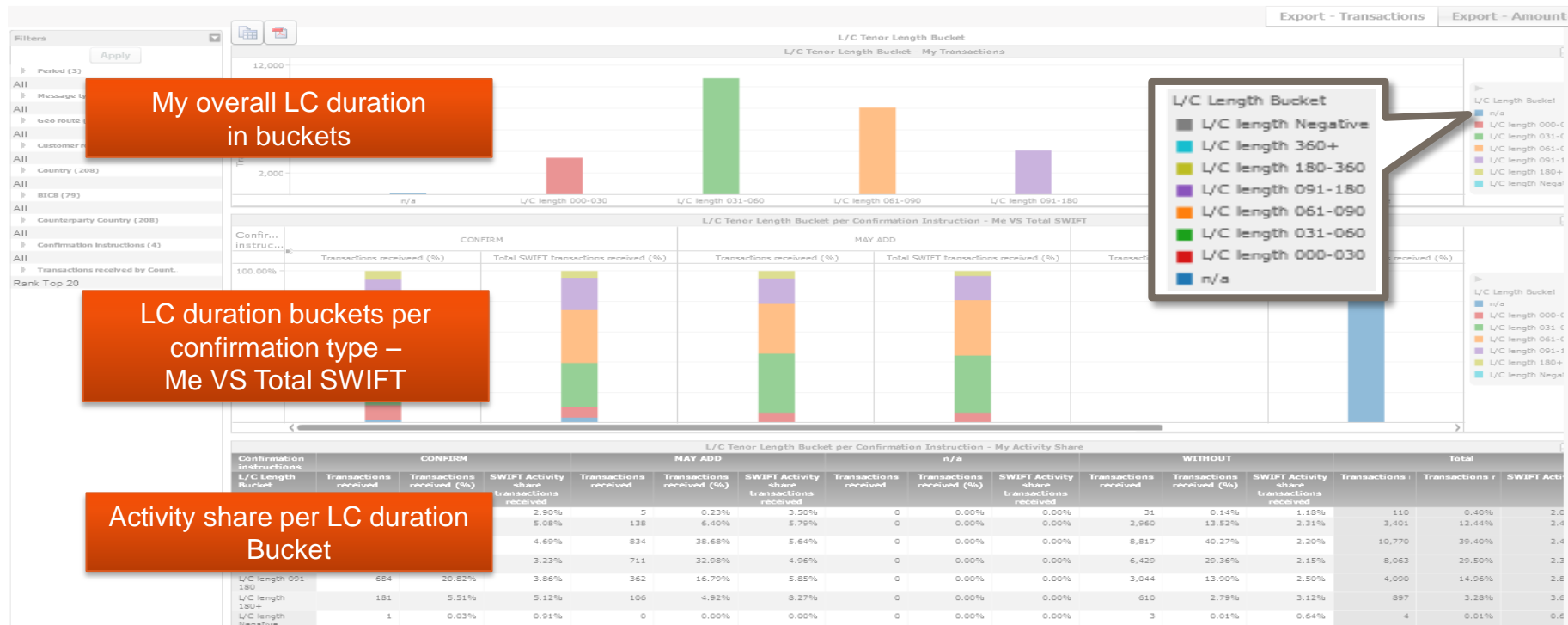
## Overview of my value buckets and benchmark against market





# LC duration buckets

## Overview of my LC duration buckets and benchmark against market



# New fields that are extracted for LCs (MT700)



## New fields that are extracted for LCs (MT700)

Enriched data available in Banking Analytics Premium

---

### Credit Available (field 41A)

- By acceptance
- By deferred payment
- By mixed payments
- By negotiation
- By payment

### LC duration Length Bucket (field 31D minus 31C)

- 0-30 days
- 31-60 days
- 61-90 days
- 91-180 days
- 180-360 days
- 360+ days
- Negative

### Confirmation instruction (field 49)

- Confirm
- May Add
- Without

# Find out more about Watch here



Learn more on our e-training platform: [SWIFT Smart](#)

Access to this module is only available for swift.com registered users.  
**Dedicated e-trainings on Watch Products available**



[Customer Support](#)



[Business Intelligence](#)  
[Transaction Banking](#)



[SWIFT Business Intelligence](#)

[Watch documentation](#)



Documentation available on the [Watch platform](#)



Provide us your feedback at [watch@swift.com](mailto:watch@swift.com)



[www.swift.com](http://www.swift.com)